

CONTRACT NO. B-9146

INDEX					
PROJECT	STRUCTURE	TYPE	SPAN	OVER	STATION
I-65-2(82)68	I-65-68-4699A & JA	DECK RECONSTRUCTION AND OVERLAY	CONT. STEEL BEAM 15 SPANS	DRIFTWOOD RIVER	E. STRUCTURE 3192+28.62
	I-65-68-4665A		4 SPANS	SR. 46	3175+24.51
SHEET NO.	SHEET DESIGNATION	SUBJECT			F.H.W.A. APPROVAL
1		INDEX & TITLE SHEET			
2		OVERLAY DETAILS			
3	D1	GENERAL PLAN I-65-68-4699A & JA			
4	D2	GENERAL PLAN CONTINUED			
5	D3	TYPE D EXPANSION JOINT			
6	D4	DETAILS & SUMMARY			
20		CROSSOVER DETAILS MISCELLANEOUS DETAILS			
21		GUARD RAIL DETAILS			
22	D&A	GENERAL PLAN I-65-68-4665A			

STATE OF INDIANA  
INDIANA STATE HIGHWAY COMMISSION

# BRIDGE PLANS

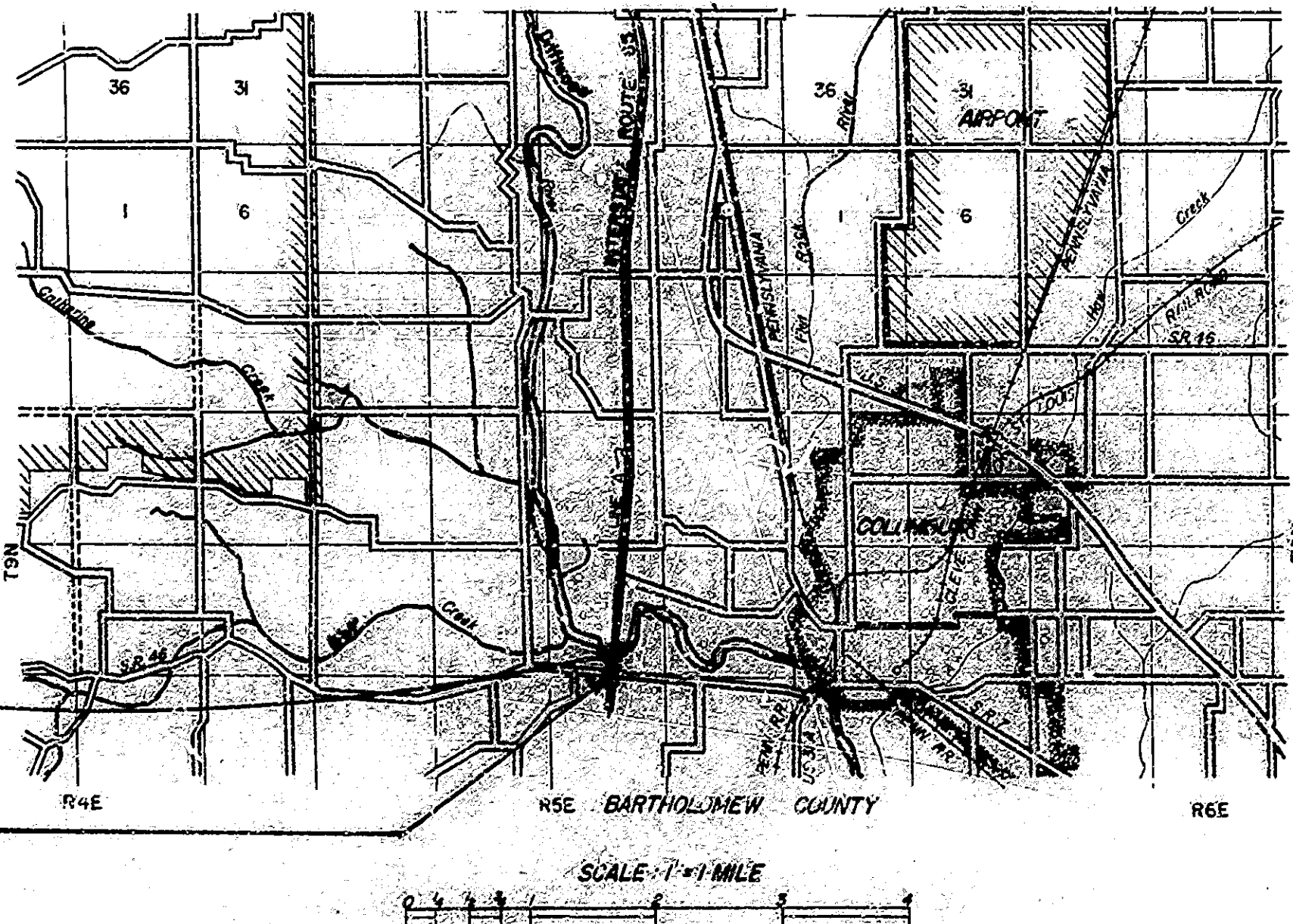
## FOR SPANS OVER 20 FEET

### ON

## INTERSTATE ROAD NO. 65

(82)68 PE.  
(82)68 CONST.

DECK OVERLAY FOR STRUCTURE I-65-68-4699A & JA, LOCATED ON I-65 OVER DRIFTWOOD RIVER, BARTHOLOMEW COUNTY.  
DECK OVERLAY FOR STRUCTURE I-65-68-4665A LOCATED ON I-65 OVER SR. 46, BARTHOLOMEW COUNTY



DECK OVERLAY for  
STRUCTURE I-65-68-4699A  
North Bound  
STRUCTURE I-65-68-4699A  
South Bound  
Cont. Steel Beam  
15 Spans - Bridges

DECK OVERLAY for  
I-65-68-4665A  
Twin Structure  
Cont. Steel Beam - 4 spans

BRIDGES OVER 20' SPAN					
FEDERAL PROJECT NO.	STATE	PROJECT NO.	FISCAL YEAR	SHEET NO.	TOTAL SHEETS
4	IND	EFT-68-2(82)68	1978	1	12

INDEX CONTINUED STANDARD DRAWINGS					
SHEET NO.	SHEET DESIGNATION	SUBJECT	F.H.W.A. APPROVAL	ADOPTED REVISION	
6A	BRIDGE STD. BR1	ALUMINUM BRIDGE RAILING	7-26-71	R3-1-71	
6B	BRIDGE STD. BR2	ALUMINUM BRIDGE RAILING DETAILS	7-26-71	R3-1-71	
	BRIDGE STD. BR3	STEEL BRIDGE RAILING			
	BRIDGE STD. BR4	STEEL BRIDGE RAILING DETAILS			
	BRIDGE STD. CT	MISCELLANEOUS DETAILS			
	BRIDGE STD. G2	MISCELLANEOUS DETAILS			
	BRIDGE STD. G3	MISCELLANEOUS DETAILS			
	BRIDGE STD. D	CASTING DETAILS ROADWAY DRAINS			
	BRIDGE STD. PB	PRESTRESSED CONCRETE TYPE I-BEAMS			
	BRIDGE STD. PB	PRESTRESSED CONCRETE TYPE I-BEAMS			
	BRIDGE STD. PB	PRESTRESSED COMPOSITE BOX BEAMS			
	BRIDGE STD. PB	PRESTRESSED COMPOSITE BOX BEAMS WIDE			
	BRIDGE STD. PB10	TOLERANCES FOR FABRICATION OF PRESTRESSED BEAMS			
	BRIDGE STD. PB11	ELASTOMERIC BEARING PAD DETAILS			
	BRIDGE STD. R2A	BRIDGE LIGHTING DETAILS			
	BRIDGE STD. S1	MISCELLANEOUS DETAILS			
	BRIDGE STD. S1H	STEEL SHOE DETAILS			
	BRIDGE STD. TSHEET A	STANDARD TEMPORARY BRIDGE			
	BRIDGE STD. TSHEET B	STANDARD TEMPORARY BRIDGE			
	BRIDGE STD.				
	BRIDGE STD.				
	ROAD STD. SHEET AC6C	STANDARD CONT. REINF. CONC. PAVEMENT			
	ROAD STD. SHEET BC6C	STANDARD CONT. REINF. CONC. PAVEMENT			
	ROAD STD. SHEET C6C	STANDARD CONT. REINF. CONC. PAVEMENT			
	ROAD STD. SHEET A	STANDARD PAVEMENT JOINTS			
	ROAD STD. SHEET MA	MISCELLANEOUS STANDARDS			
	ROAD STD. SHEET MA	MISCELLANEOUS STANDARDS			
	ROAD STD. SHEET MB	MISCELLANEOUS STANDARDS			
	ROAD STD. SHEET MB2	MISCELLANEOUS STANDARDS			
	ROAD STD. SHEET MC	MISCELLANEOUS STANDARDS			
	ROAD STD. SHEET MC1	MISCELLANEOUS STANDARDS			
	ROAD STD. SHEET MD	MISCELLANEOUS STANDARDS			
	ROAD STD. SHEET MD	MISCELLANEOUS STANDARDS			
	ROAD STD. SHEET MD	MISCELLANEOUS STANDARDS			
	ROAD STD. SHEET ME	MISCELLANEOUS STANDARDS			
	ROAD STD. SHEET ME	MISCELLANEOUS STANDARDS			
	ROAD STD. SHEET MH	MISCELLANEOUS STANDARDS			
	ROAD STD. SHEET MH	MISCELLANEOUS STANDARDS			
	ROAD STD. SHEET ML	MISCELLANEOUS STANDARDS			
	ROAD STD. SHEET ML	MISCELLANEOUS STANDARDS			
	ROAD STD. SHEET MN	MISCELLANEOUS STANDARDS			
	ROAD STD. SHEET MN	MISCELLANEOUS STANDARDS			
	ROAD STD. SHEET MP	MISCELLANEOUS STANDARDS			
	ROAD STD. SHEET MP	MISCELLANEOUS STANDARDS			
	ROAD STD. SHEET MQ	MISCELLANEOUS STANDARDS			
	ROAD STD. SHEET MR	MISCELLANEOUS STANDARDS			
	ROAD STD. SHEET MR	MISCELLANEOUS STANDARDS			
7A	ROAD STD. SHEETS	MISCELLANEOUS STANDARDS CENTER DITCH TIE-INS	8-25-69	R2-6-69	
	ROAD STD.	STANDARD REINF. CONC. BOX CULVERTS			
	ROAD STD.	STANDARD REINF. CONC. CULVERTS			
	ROAD STD.	GUARD RAIL CLASS			
7B	ROAD STD. SHEET GR	GUARD RAIL CLASS GA OR GST			
7C	ROAD STD. SHEET GR5	ALUMINUM GUARD RAIL DETAILS	2-2-72	R2-2-72	
7D	ROAD STD. SHEET GR6	STEEL TUBE GUARD RAIL DETAILS			
7E	ROAD STD. SHEET GR5	ALUMINUM BEAM GUARD RAIL			
7F	ROAD STD. SHEET GR10	GUARD RAIL BUREAU ENDS			
	ROAD STD.	STANDARDS FOR SUPERELEVATION			
	ROAD STD. SHEET OC6C	STANDARD DETOUR SIGNS			
	ROAD STD. SHEET OC6C	STANDARD DETOUR SIGNS			
	ROAD STD. SHEET OC6C	STANDARD DETOUR SIGNS			
	ROAD STD. SHEET OC6C	STANDARD DETOUR SIGNS			
11A	ROAD STD. SHEET 11A	STANDARD DETOUR SIGNS			
11B	ROAD STD. SHEET 11B	STANDARD DETOUR SIGNS			
11C	ROAD STD. SHEET 11C	STANDARD DETOUR SIGNS			
11D	ROAD STD. SHEET 11D	STANDARD DETOUR SIGNS			
11E	ROAD STD. SHEET 11E	STANDARD DETOUR SIGNS			
11F	ROAD STD. SHEET 11F	STANDARD DETOUR SIGNS			
11G	ROAD STD. SHEET 11G	STANDARD DETOUR SIGNS			
11H	ROAD STD. SHEET 11H	STANDARD DETOUR SIGNS			
11I	ROAD STD. SHEET 11I	STANDARD DETOUR SIGNS			
11J	ROAD STD. SHEET 11J	STANDARD DETOUR SIGNS			
11K	ROAD STD. SHEET 11K	STANDARD DETOUR SIGNS			
11L	ROAD STD. SHEET 11L	STANDARD DETOUR SIGNS			
11M	ROAD STD. SHEET 11M	STANDARD DETOUR SIGNS			
11N	ROAD STD. SHEET 11N	STANDARD DETOUR SIGNS			
11O	ROAD STD. SHEET 11O	STANDARD DETOUR SIGNS			
11P	ROAD STD. SHEET 11P	STANDARD DETOUR SIGNS			
11Q	ROAD STD. SHEET 11Q	STANDARD DETOUR SIGNS			
11R	ROAD STD. SHEET 11R	STANDARD DETOUR SIGNS			
11S	ROAD STD. SHEET 11S	STANDARD DETOUR SIGNS			
11T	ROAD STD. SHEET 11T	STANDARD DETOUR SIGNS			
11U	ROAD STD. SHEET 11U	STANDARD DETOUR SIGNS			
11V	ROAD STD. SHEET 11V	STANDARD DETOUR SIGNS			
11W	ROAD STD. SHEET 11W	STANDARD DETOUR SIGNS			
11X	ROAD STD. SHEET 11X	STANDARD DETOUR SIGNS			
11Y	ROAD STD. SHEET 11Y	STANDARD DETOUR SIGNS			
11Z	ROAD STD. SHEET 11Z	STANDARD DETOUR SIGNS			

TRAFFIC DATA			
A.D.T. (1970)			
A.D.T. (1980 PROJECTED)			
D.V.V. (19 PROJECTED)			
TRUCKS		DNV.	%ADT.
DESIGN SPEED			85 M.P.H.
ACCESS CONTROL			

BRIDGE LENGTH: 0.193 MI.  
ROADWAY LENGTH: 0.000 MI.  
TOTAL LENGTH: 0.193 MI.  
MAX. GRADE: %

APPROVED: 7-18-72  
[Signature]

INDIANA STATE HIGHWAY COMMISSION  
STANDARD SPECIFICATIONS DATED 1971  
TO BE USED WITH THESE PLANS.

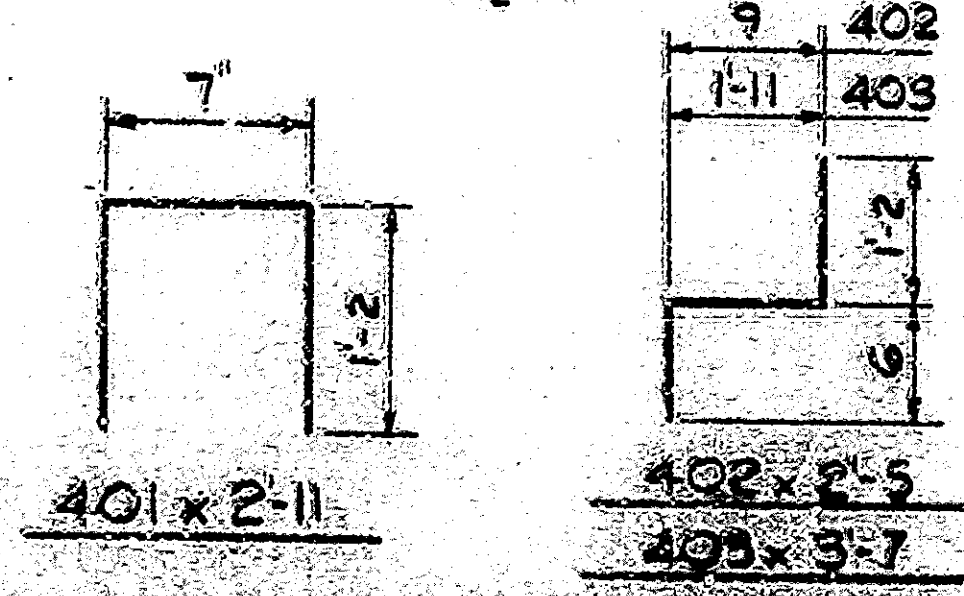
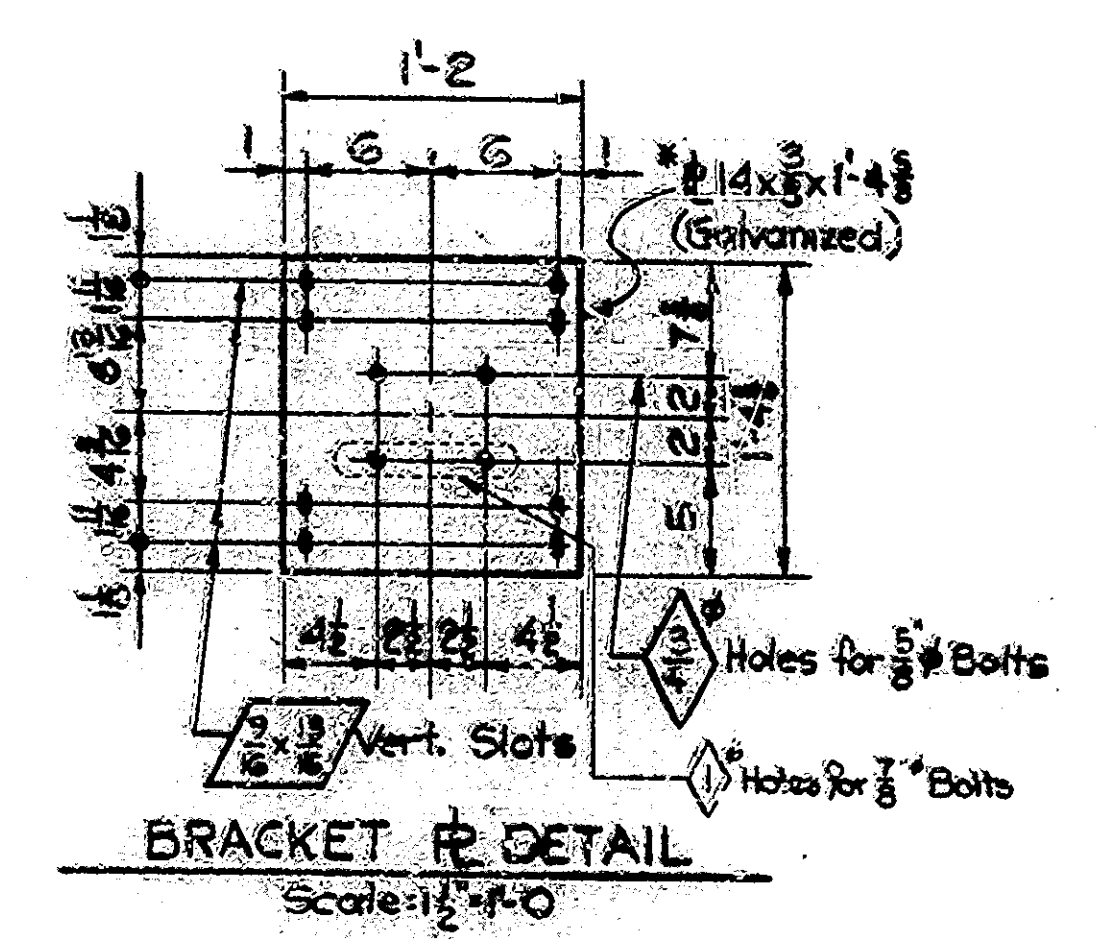
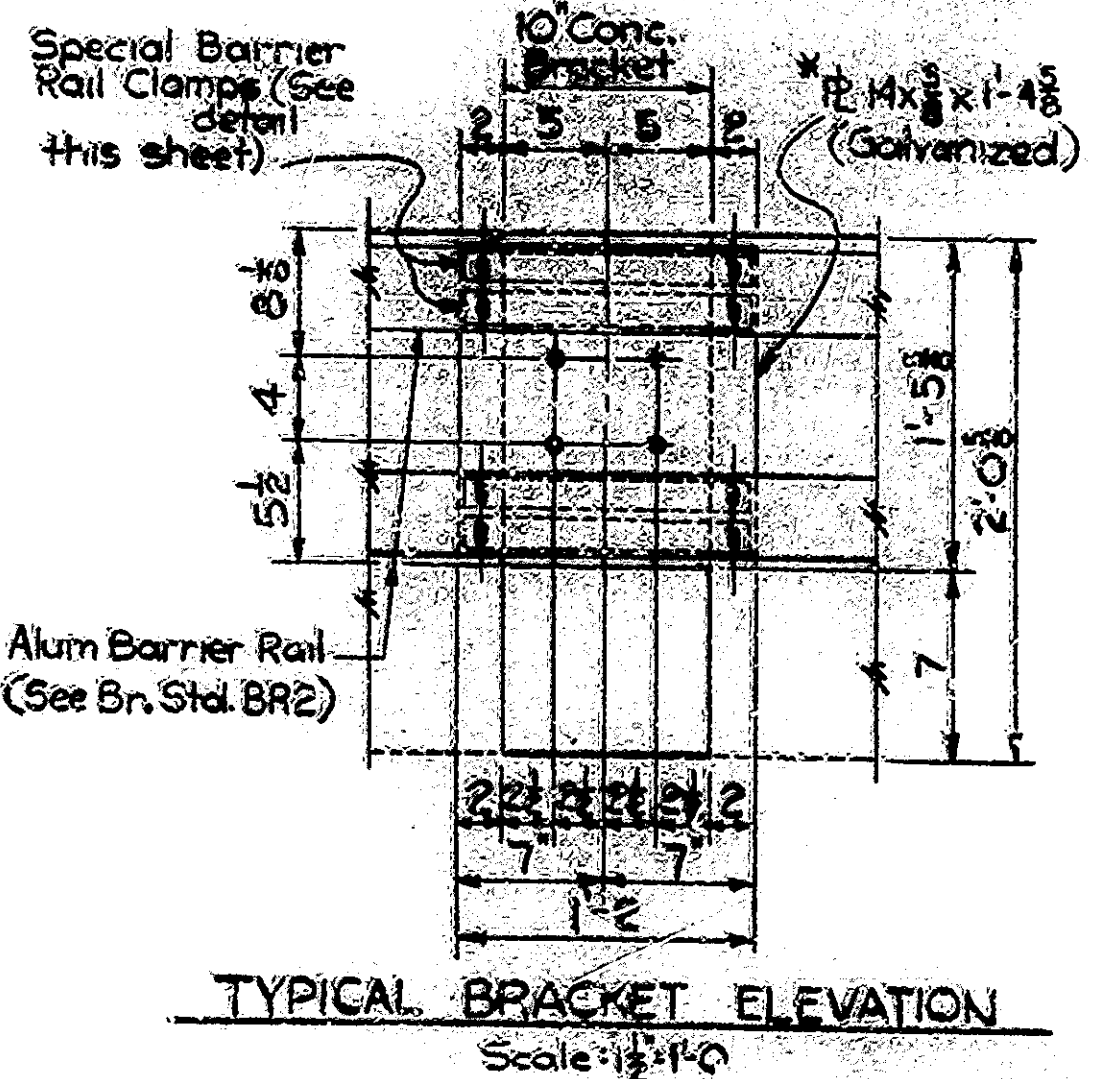
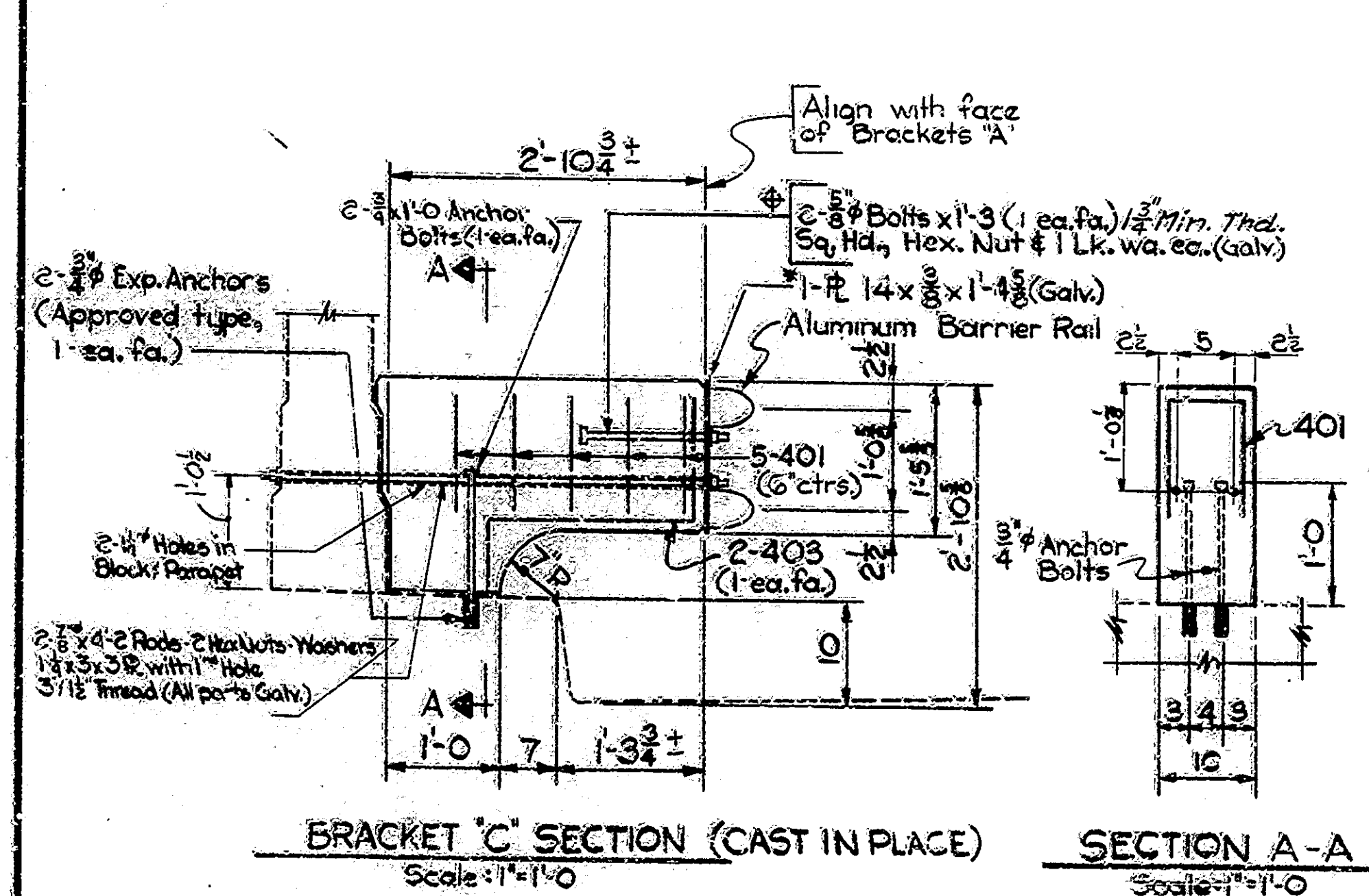
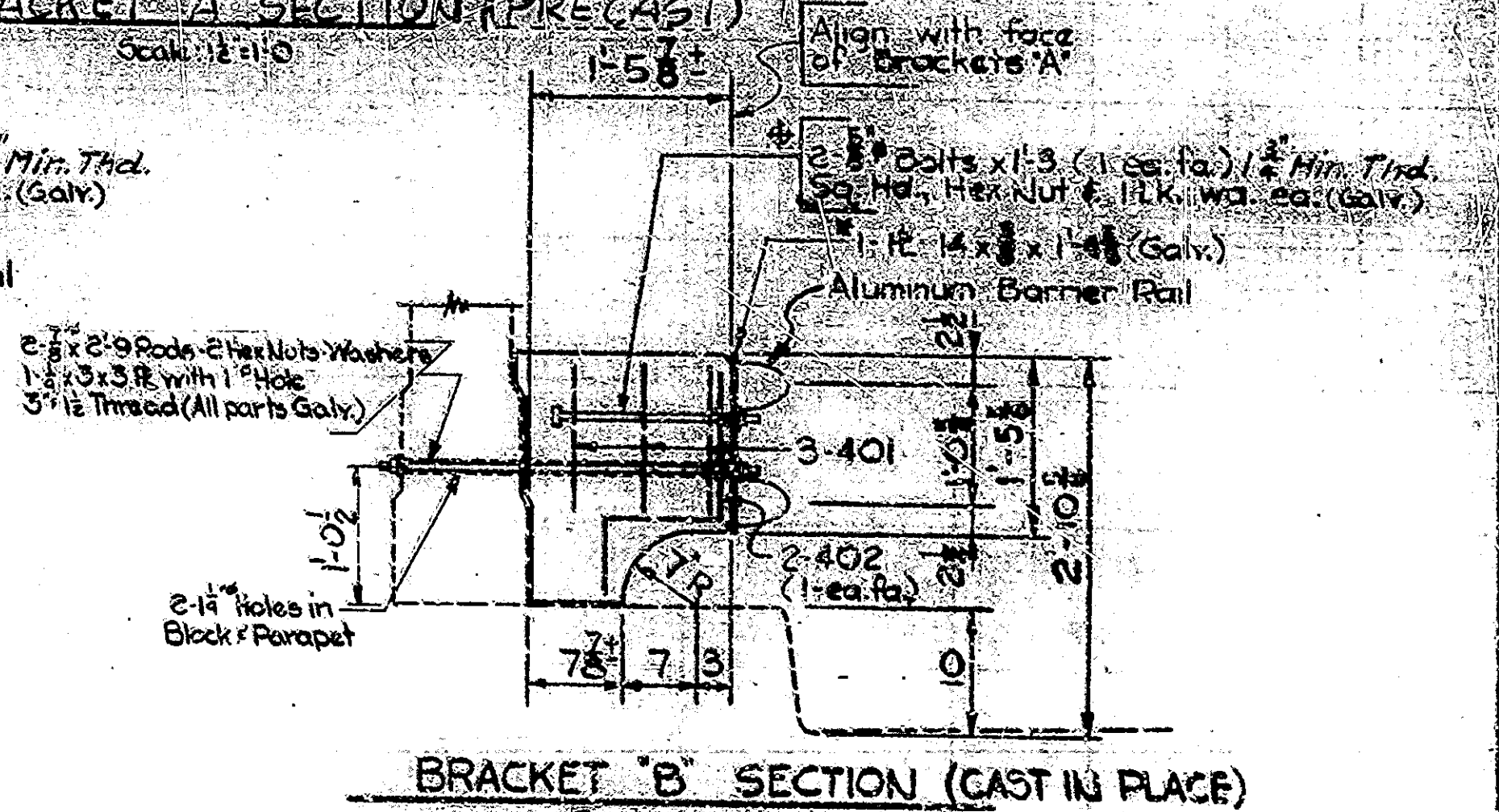
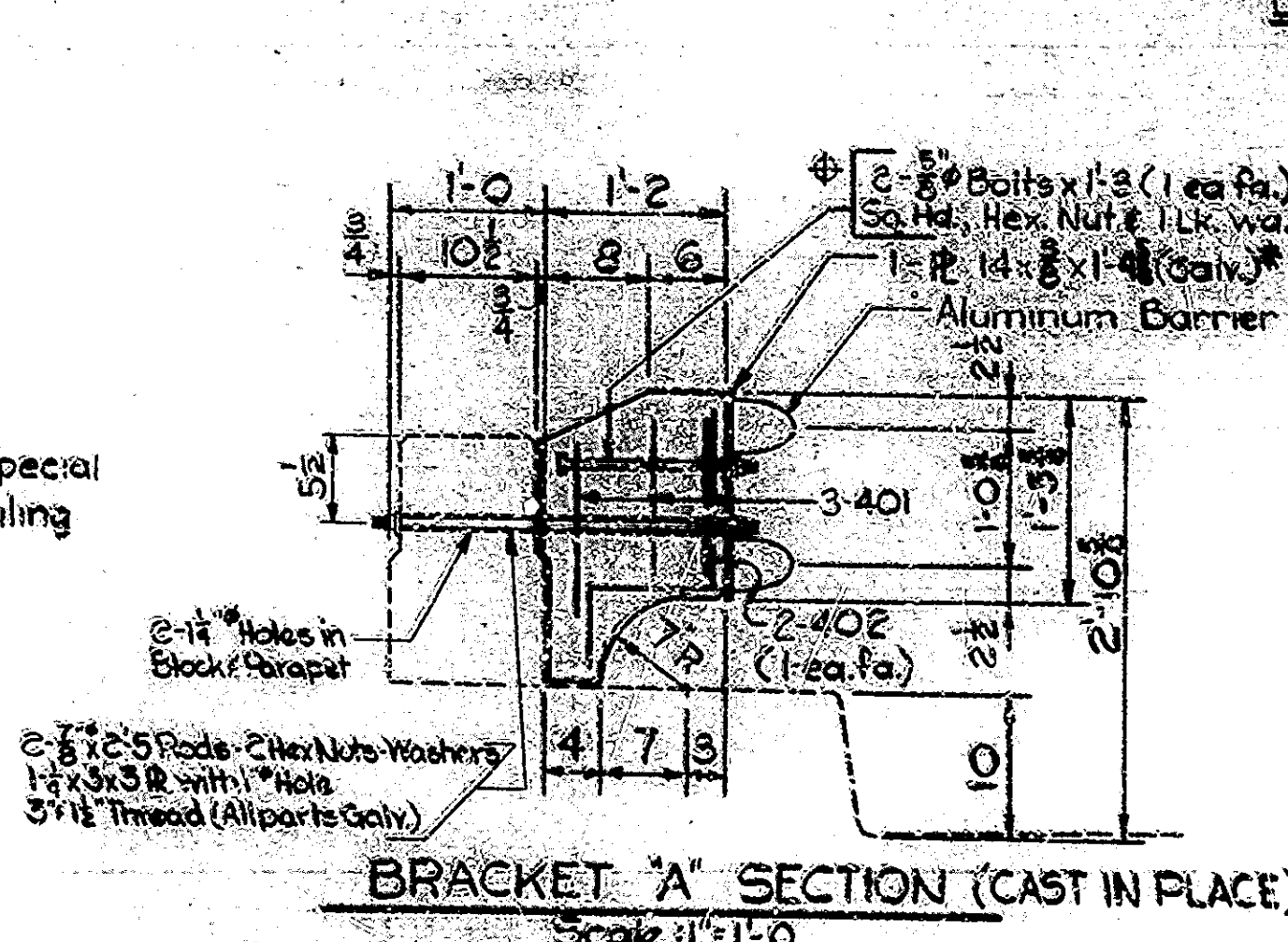
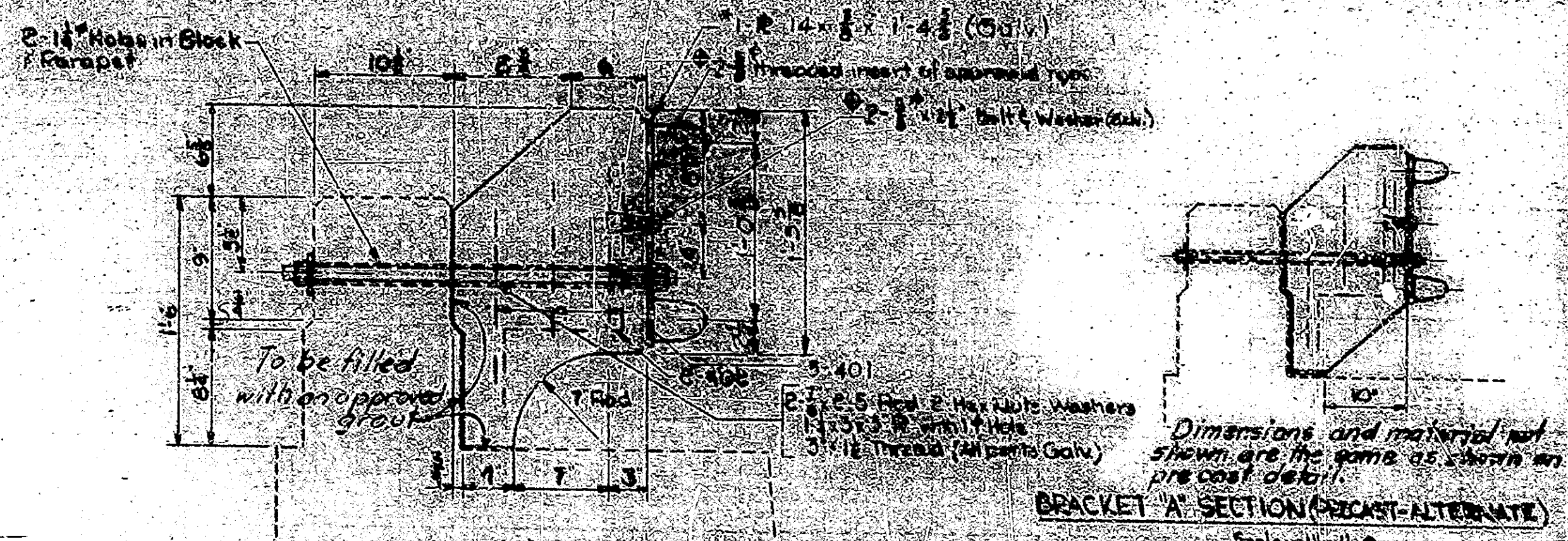
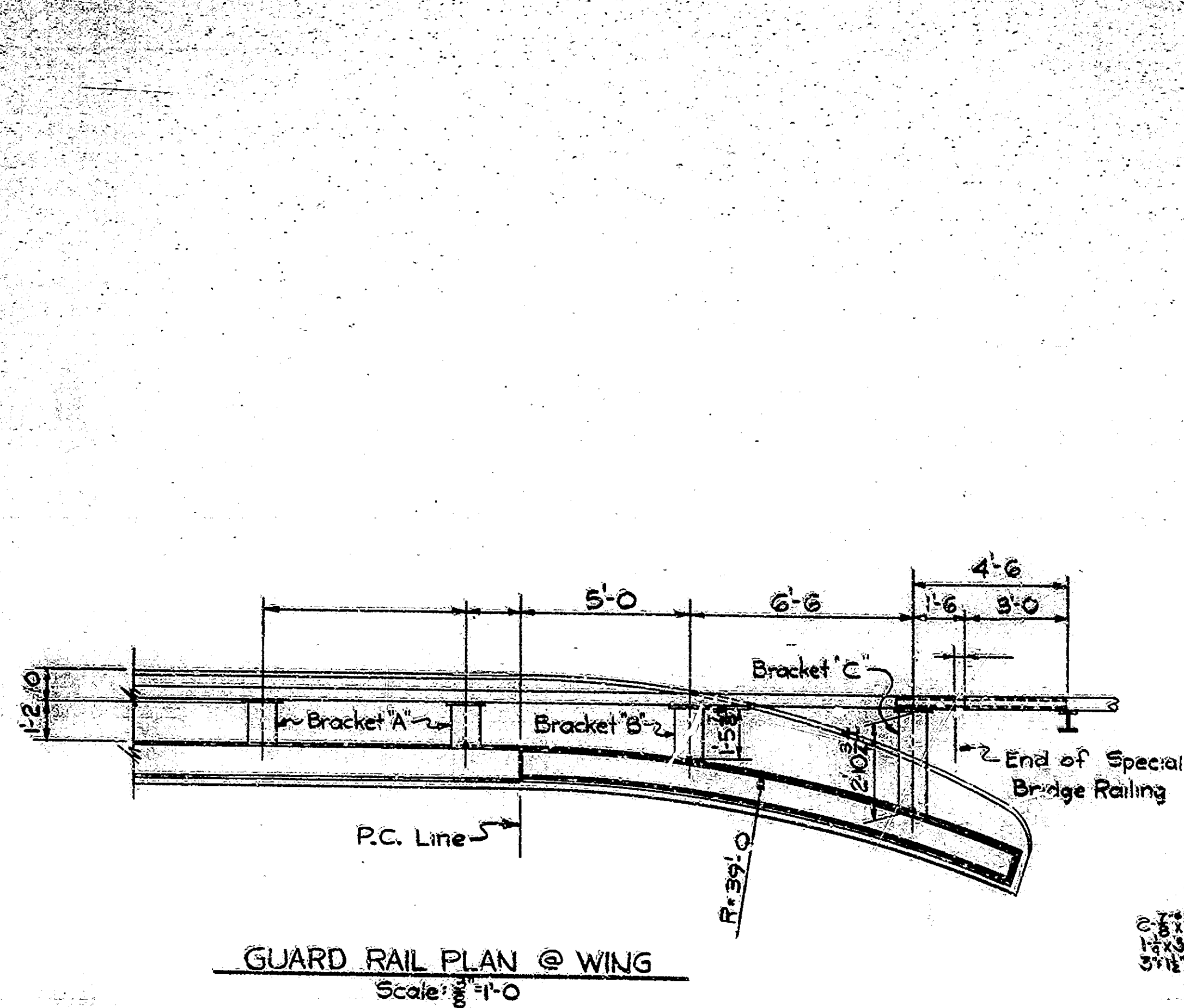
REVISIONS	
NO.	DESCRIPTION
1	ISSUED FOR CONSTRUCTION



FEDERAL HIGHWAY ADMINISTRATION  
DEPARTMENT OF TRANSPORTATION

APPROVED: \_\_\_\_\_  
DIVISION ENGINEER DATE





**NOTES:**

Material in  $\frac{3}{8}$ " Steel Rods and  $\frac{3}{4}$ " R's to be A-36,  $\frac{5}{8}$ " and  $\frac{3}{4}$ " bolts shall conform to ASTM A-307.

$\frac{3}{4}$ " Expansion Anchors shall be of a type approved by the Engineer. They shall be a minimum of 5 inches in length and capable of a pull-out test of 12,000 pounds.

Concrete in Brackets to be Class A.

Chamfer exposed concrete edges  $\frac{1}{4}$ ".

See Br. Shts. BR1, BR2 for Guard Rail notes and details.

Alternate Precast Brackets may be used. If the Precast Bracket is used, details of the proposed Bracket shall be submitted to the Engineer for approval.

As an alternate, an aluminum plate may be used. If used it shall be aluminum alloy 6061-T6 conforming to ASTM B-209. Plates shall be free of sharp edges and irregularities.

For details of alternate aluminum bracket, see Br. Shts. BR1, BR2, BR3.

WHERE EITHER THE  $\frac{5}{8}$ " BOLT OR CAST-IN-PLACE THREADED INSERT IS SPECIFIED THE OTHER MAY BE SUBSTITUTED AT THE CONTRACTORS OPTION.

**PSY ITEMS**

REMOVAL OF PRESENT RAILING = LUL FT.  
BARRIER RAILING, TYPE "X" = LUL FT.

**BARRIER RAILING, TYPE "X" DETAILS**

**INDIANA STATE HIGHWAY COMMISSION**

SCALE: As Noted DATE: \_\_\_\_\_

RECOMMENDED FOR APPROVAL: \_\_\_\_\_

DRAWING: OF SHEET: OF

PROJECT: \_\_\_\_\_

CONTRACT NO. \_\_\_\_\_

BRIDGE FILE: I-68-469A-JH

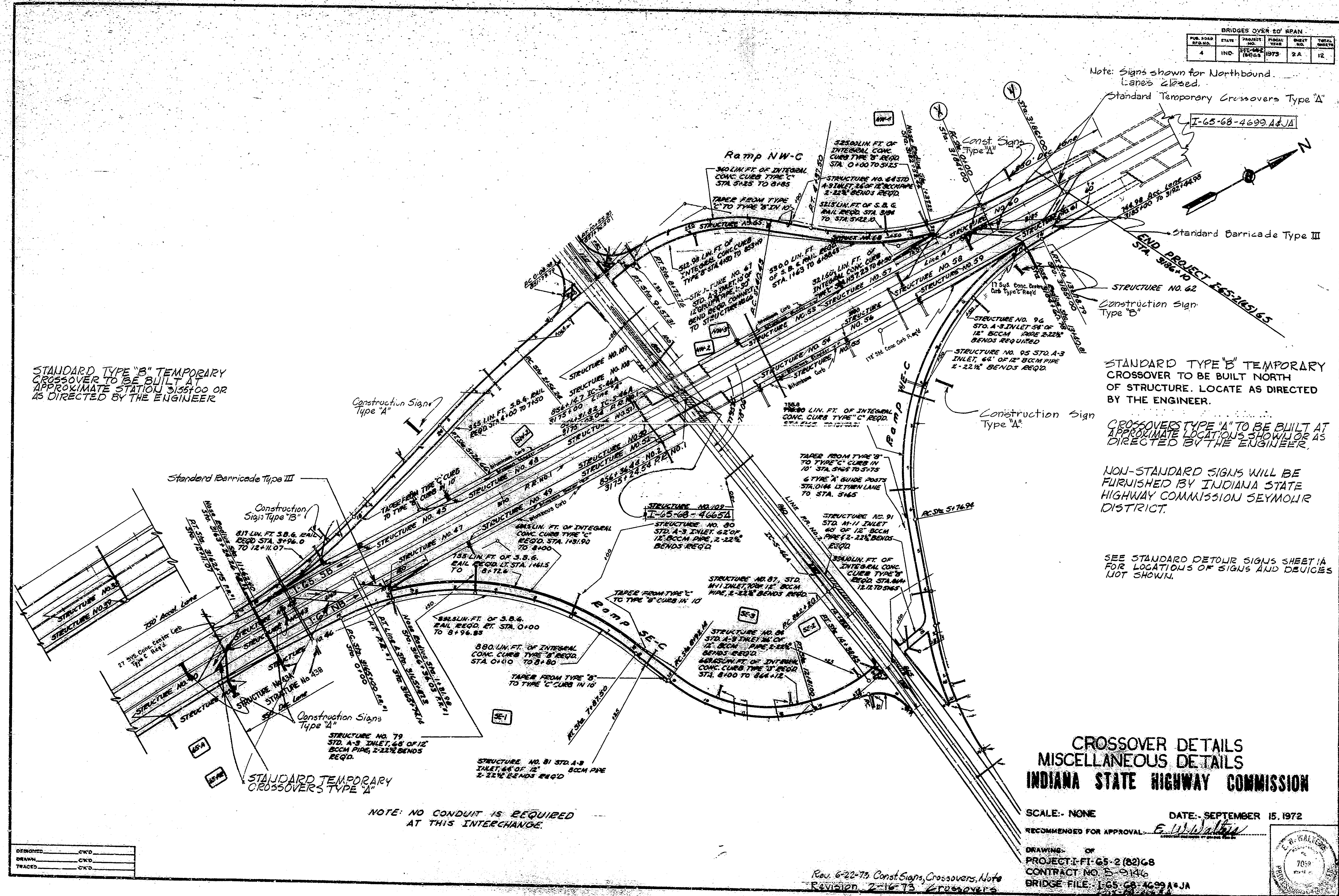
DESIGNED: GDS:STP:RND:WES:12-72  
DRAWN: CKD  
TRACED: CKD

REV. 9-10-80 5/8" Ø BOLT OR THREADED INSERT SUBSTITUTION NOTE ADDED  
REV. 1-31-74 Railing Height  
REV. 6-19-74 Anchor Bolt Detail  
REV. 1-1-77 Material Notes



BRIDGES OVER 20' SPAN					
PROJ. NO.	STATE	PROJECT NO.	FISCAL YEAR	SHEET NO.	TOTAL SHEETS
4	IND.	FT-65-2 (82)G8	1973	2A	12

Note: Signs shown for Northbound Lanes Closed.



STANDARD TYPE "B" TEMPORARY CROSSOVER TO BE BUILT AT APPROXIMATE STATION 3155+00 OR AS DIRECTED BY THE ENGINEER

STANDARD TYPE "B" TEMPORARY CROSSOVER TO BE BUILT NORTH OF STRUCTURE. LOCATE AS DIRECTED BY THE ENGINEER.

CROSSOVERS TYPE "A" TO BE BUILT AT APPROXIMATE LOCATIONS SHOWN OR AS DIRECTED BY THE ENGINEER.

NON-STANDARD SIGNS WILL BE FURNISHED BY INDIANA STATE HIGHWAY COMMISSION SEYMOUR DISTRICT.

SEE STANDARD DETOUR SIGNS SHEET 'A' FOR LOCATIONS OF SIGNS AND DEVICES NOT SHOWN.

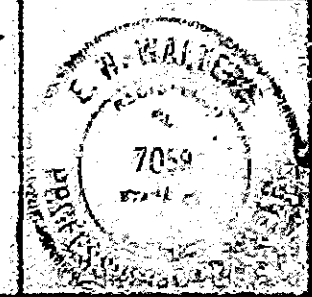
NOTE: NO CONDUIT IS REQUIRED AT THIS INTERCHANGE.

CROSSOVER DETAILS  
MISCELLANEOUS DETAILS  
INDIANA STATE HIGHWAY COMMISSION

SCALE: NONE DATE: SEPTEMBER 15, 1972

RECOMMENDED FOR APPROVAL: *E. W. Walker*

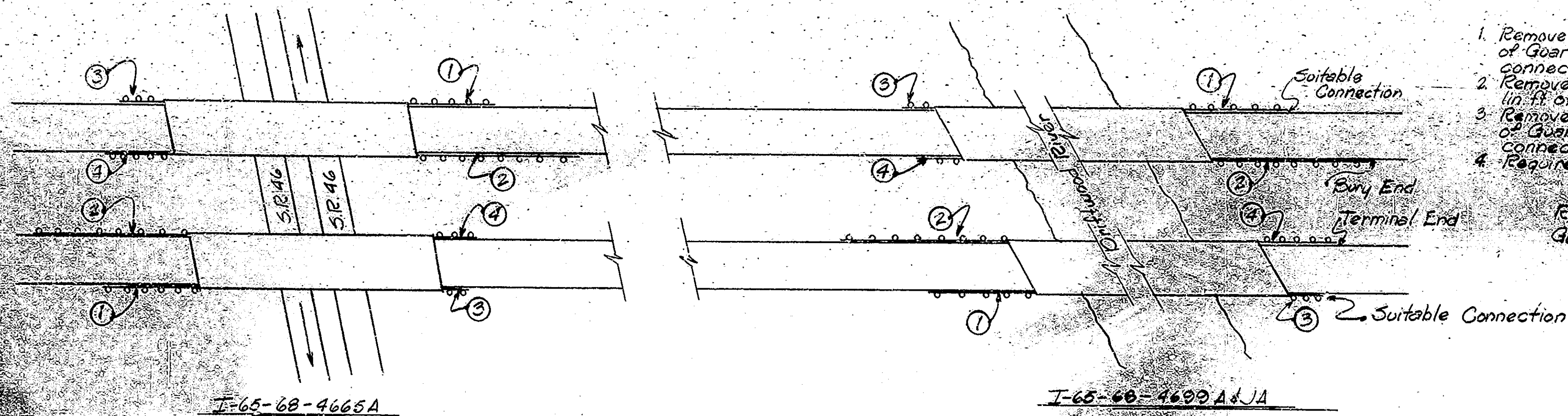
DRAWING OF PROJECT I-FT-65-2 (82)G8 CONTRACT NO. 5-9146 BRIDGE FILE: I-65-68-4699A+JA



Rev. 6-22-73 Const Signs, Crossovers, Note  
Revision 2-16-73 Crossovers

DESIGNED	CWD
DRAWN	CWD
TRACED	CWD



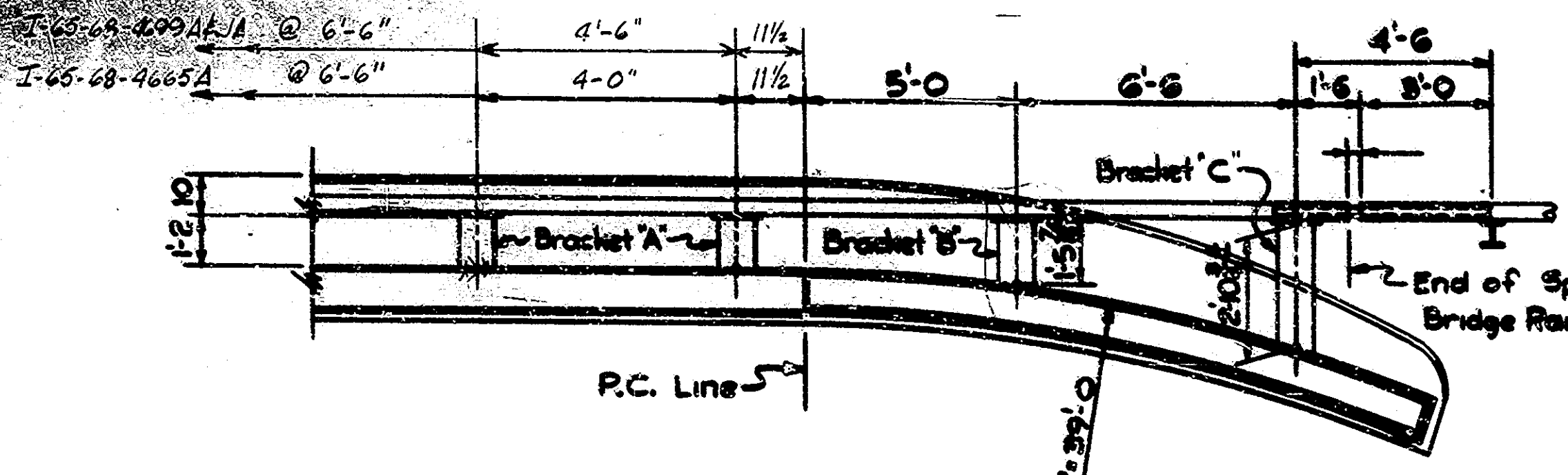


1. Remove 100 lin. ft. of Steel Beam Guard Rail. Required 100 lin. ft. of Guard Rail Type "G". Connect to existing with suitable connections.
  2. Remove 200 lin. ft. of Steel Beam Guard Rail. Required 204 lin. ft. of Guard Rail Type "G". Bury End.
  3. Remove 50 lin. ft. of Steel Beam Guard Rail. Required 50 lin. ft. of Guard Rail Type "G". Connect to existing with suitable connection.
  4. Required 52 lin. ft. of Guard Rail Type "G".
- Removal of Guard Rail 1820  
Guard Rail Type "G" 1544

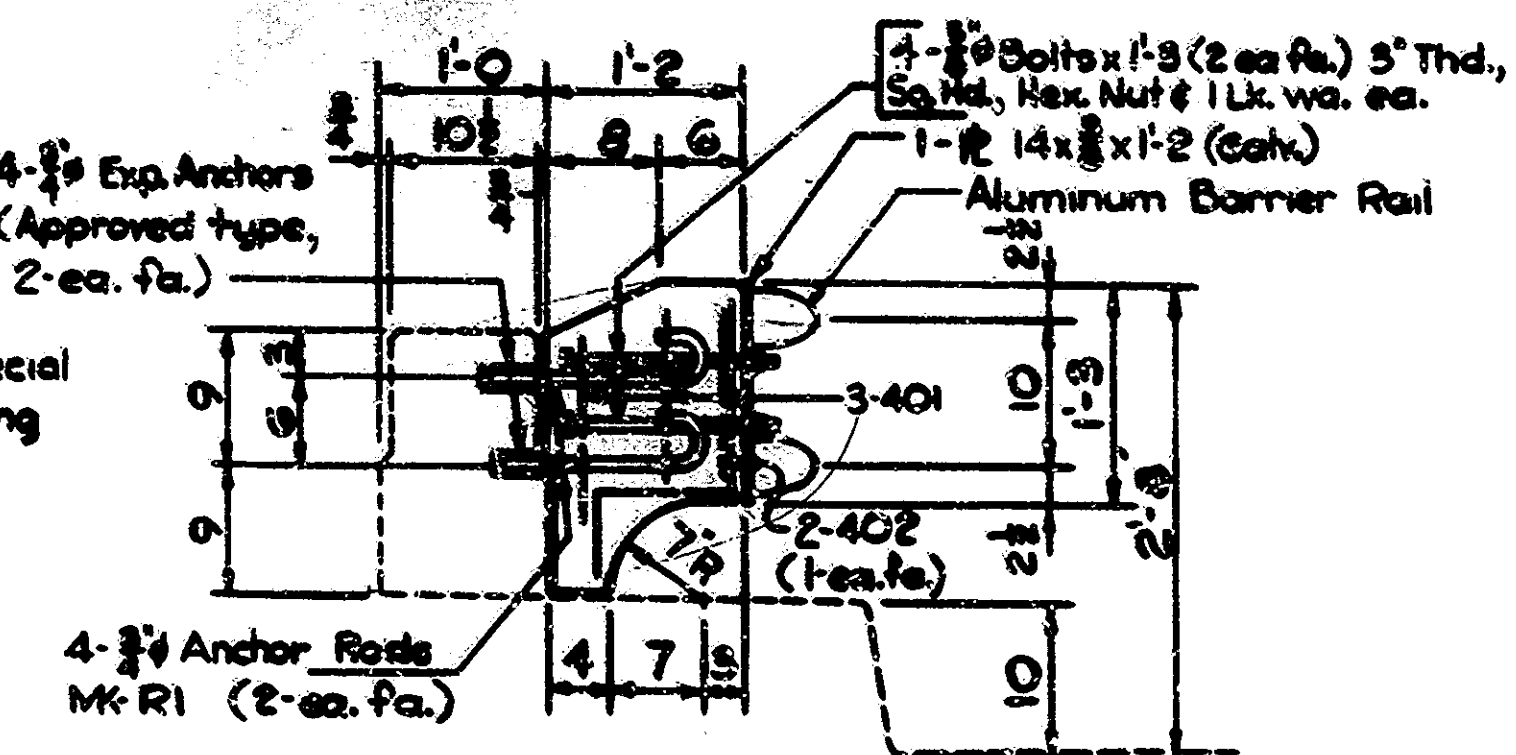
BRIDGES OVER 20' SPAN					
FIN. ROAD DIST. NO.	STATE	PROJECT NO.	FISCAL YEAR	SHEET NO.	TOTAL SHEETS
4	IND.	I-FI-65-2(182)48	1973	2B	12

1-2	R1
1-6	R2
2-11	R3

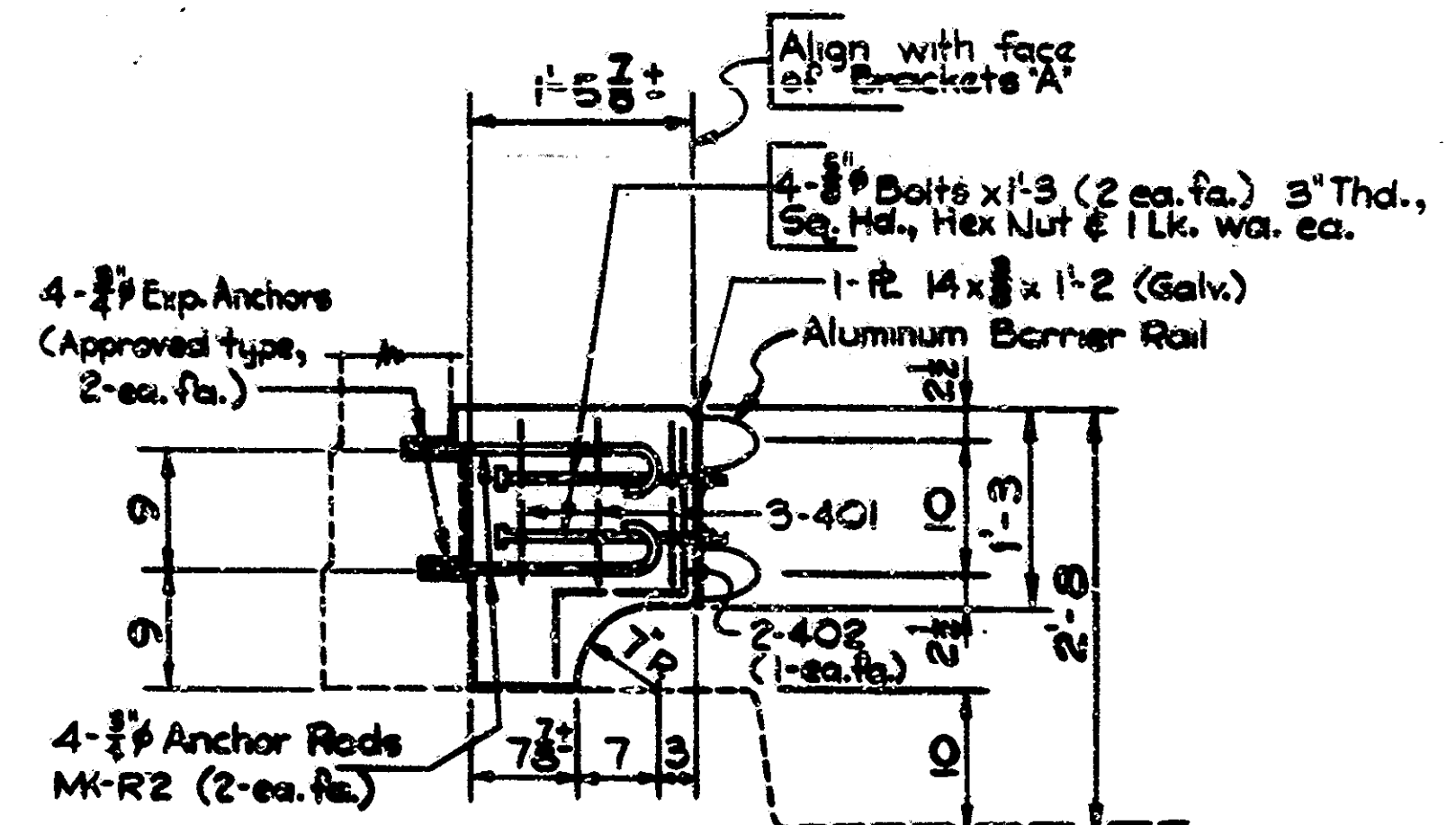
Anchor Rods (Threaded)  
 MK-R1 x 1-10  
 MK-R2 x 2-2  
 MK-R3 x 3-7



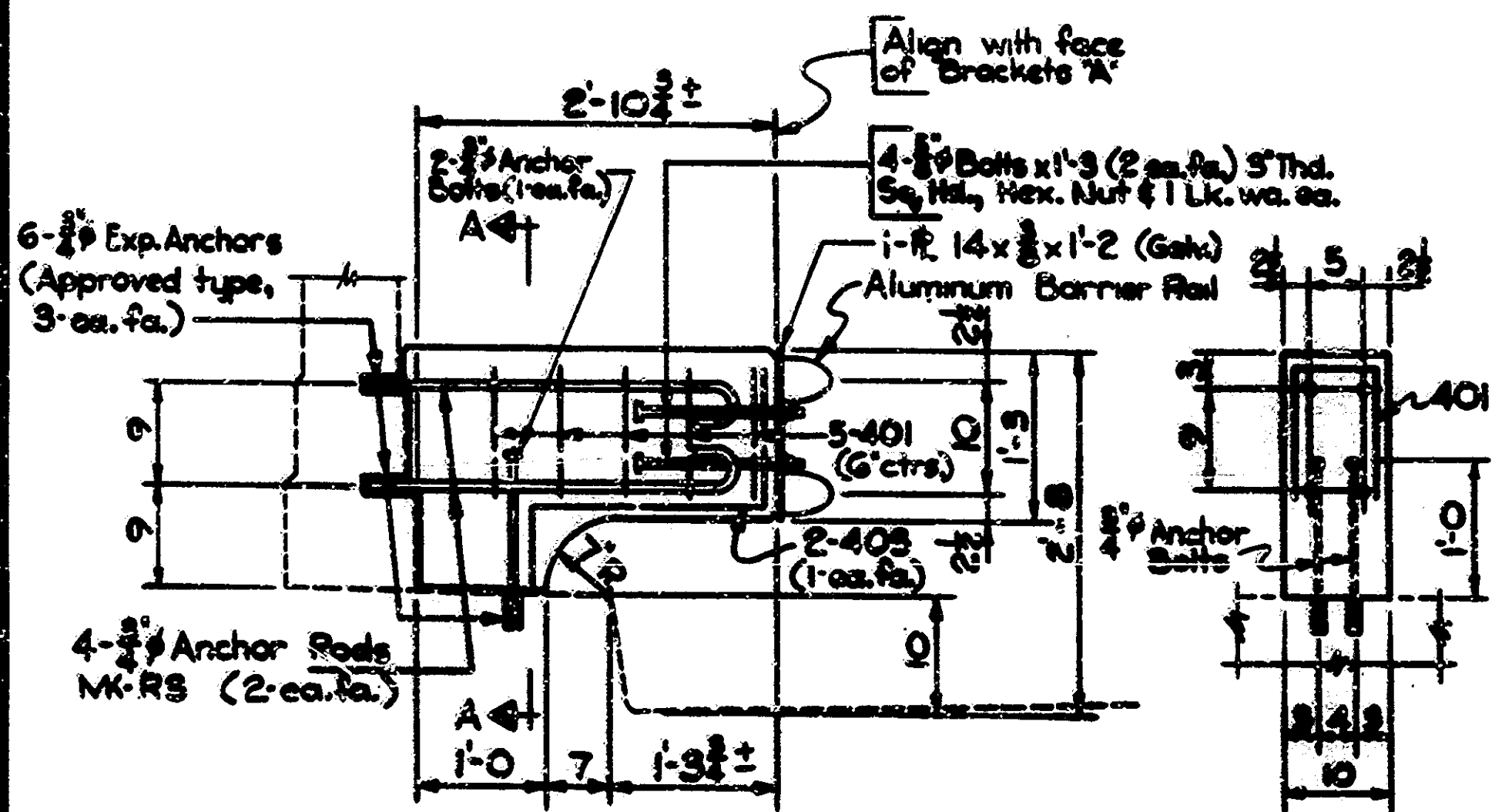
GUARD RAIL PLAN @ WING  
 Scale: 1/8" = 1'-0"



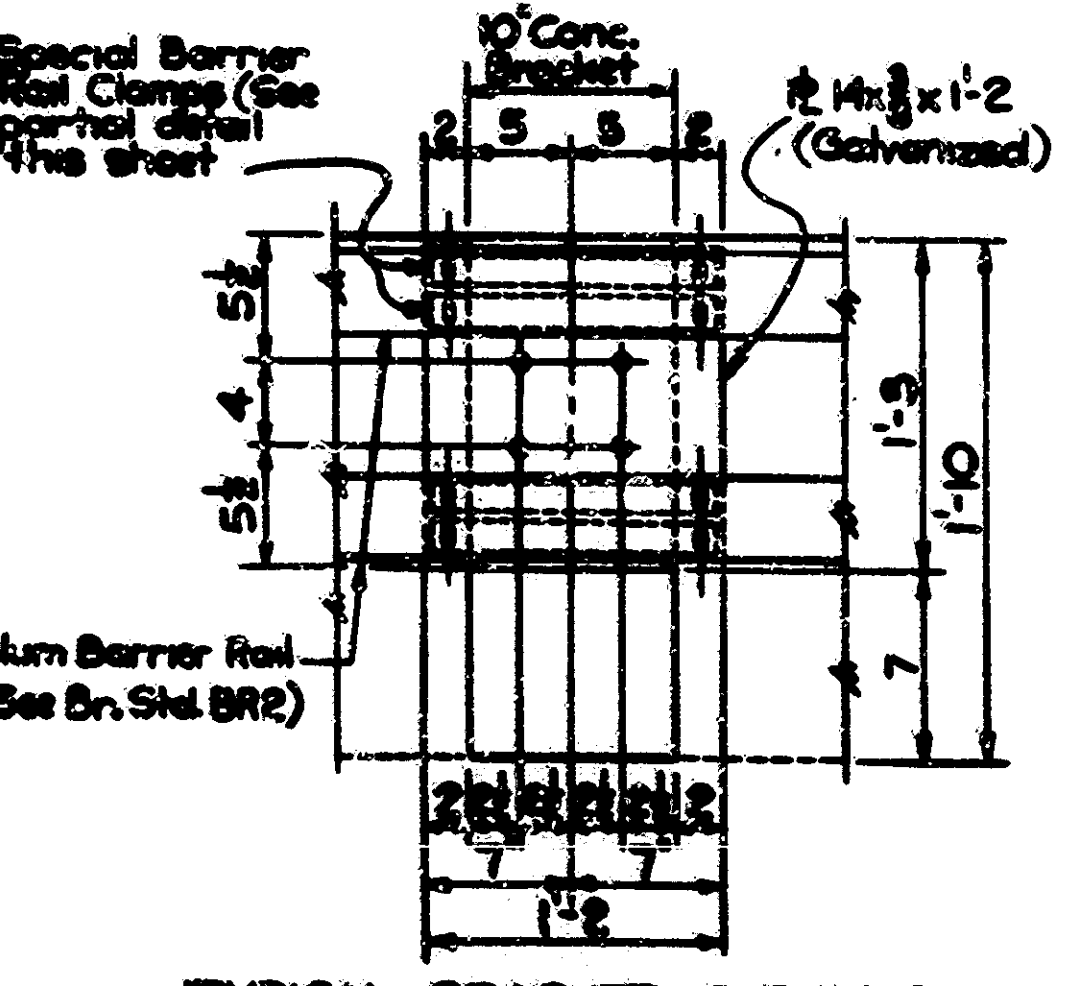
BRACKET 'A' SECTION  
 Scale: 1" = 1'-0"



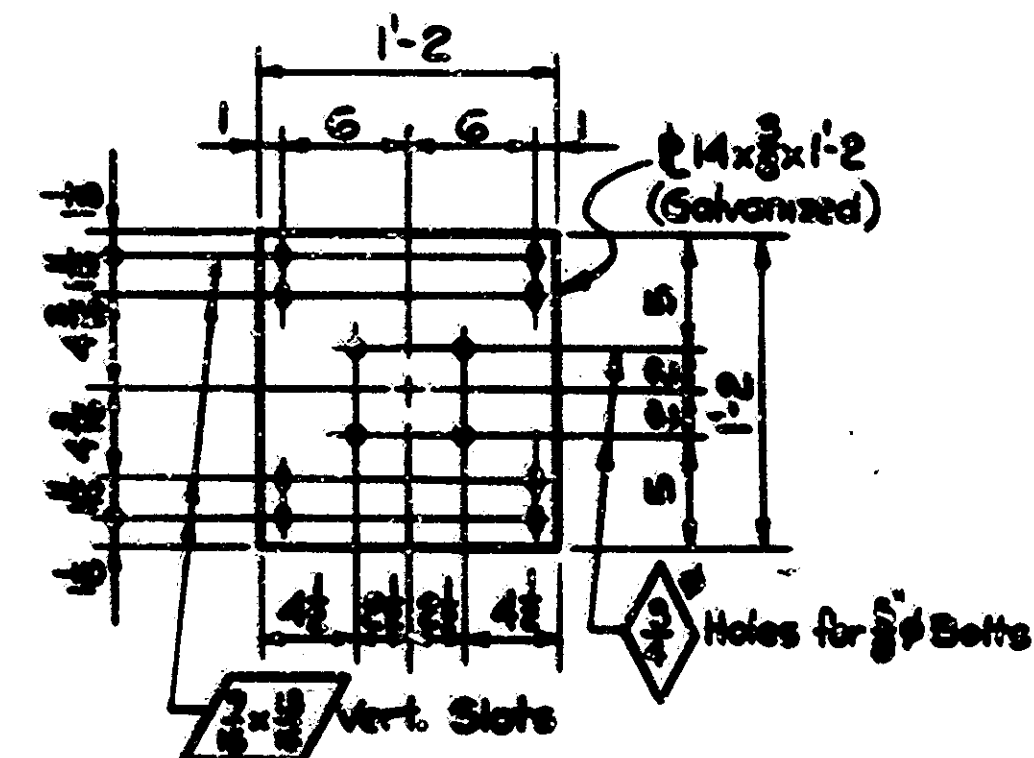
BRACKET 'B' SECTION  
 Scale: 1" = 1'-0"



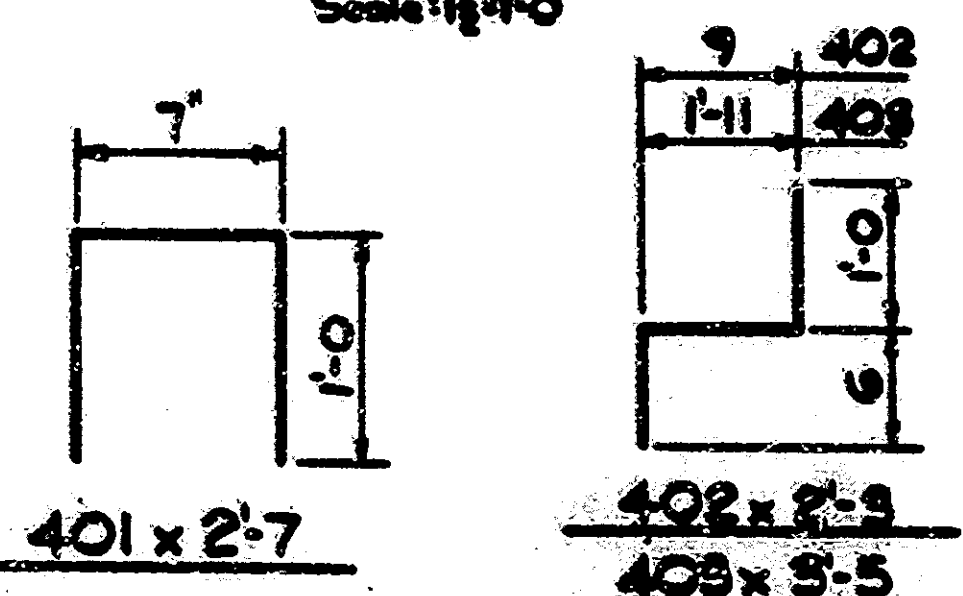
BRACKET 'C' SECTION  
 Scale: 1" = 1'-0"



TYPICAL BRACKET ELEVATION  
 Scale: 1/2" = 1'-0"



BRACKET DETAIL  
 Scale: 1/2" = 1'-0"



For additional details see Br. Std. BR2  
**SPECIAL BARRIER RAIL CLAMP BAR**  
 Not to Scale

Alternate Precast Brackets may be used Subject to the Approval of the Engineer.  
**NOTES**  
 Expansion Anchors shall be of a type approved by the Engineer. They shall be a minimum of 3 inches in length and capable of a pull-out test of 10,000 pounds.  
 Concrete in Brackets to be Class "A".  
 Chamfer exposed concrete edges 3/8 inch.  
 See Br. Stds. BR1 & BR2 for Guard Rail notes and details.

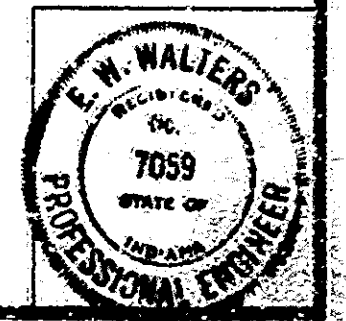
Standard drawings reqd. : BR1, BR2.

**PAY ITEMS**  
 REMOVAL OF PRESENT RAILING = 4635 Lin. Ft.  
 BARRIER RAILING, TYPE "X" = 4868 Lin. Ft.

**GUARD RAIL DETAILS**  
**INDIANA STATE HIGHWAY COMMISSION**

SCALE: As Noted DATE: JUNE 27, 1973  
 RECOMMENDED FOR APPROVAL: E. W. Walters

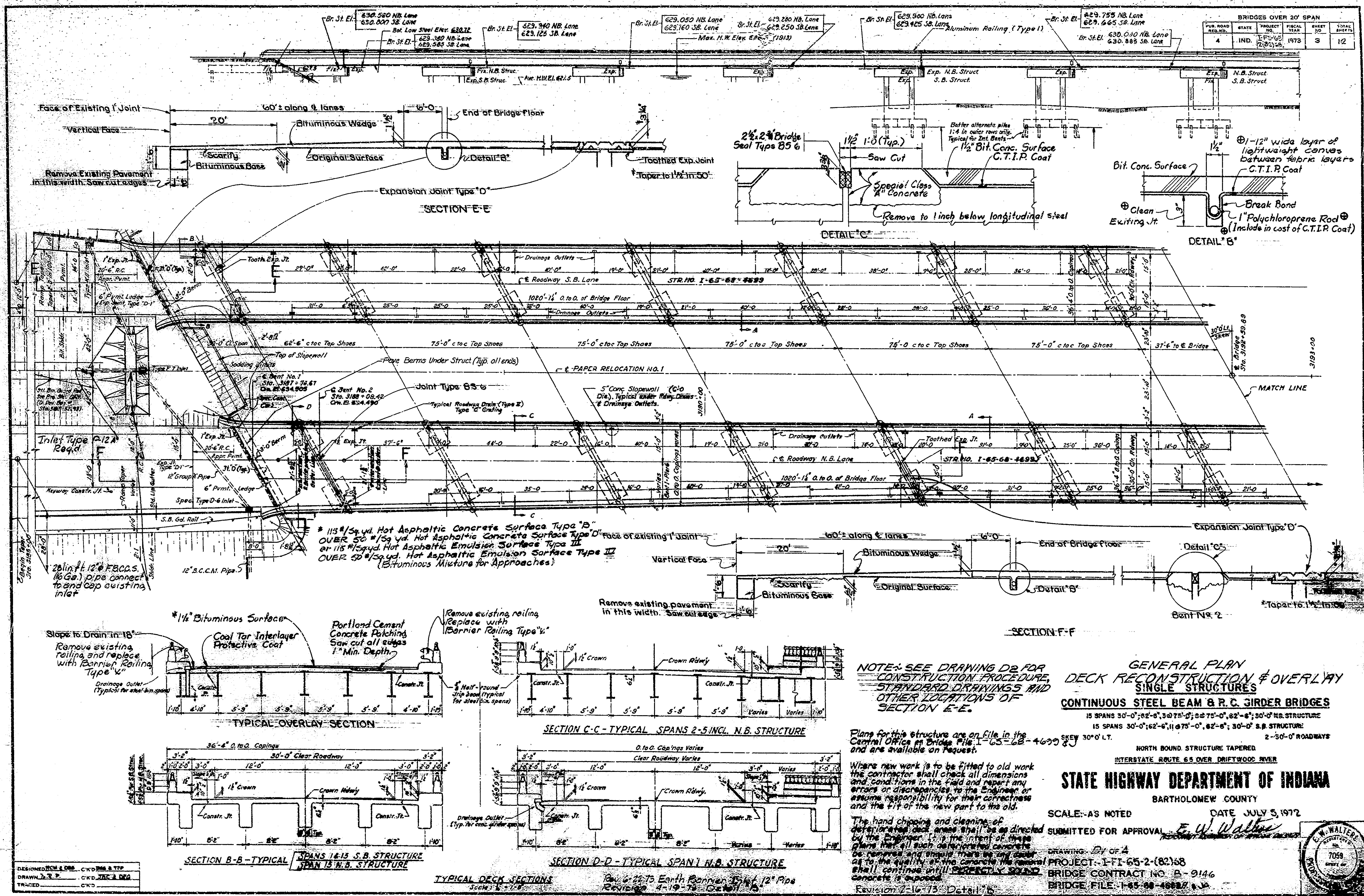
DRAWING OF PROJECT: I-FI-65-2(182)68  
 CONTRACT NO. B-3146  
 BRIDGE FILE: I-65-68-4699A & J4  
 I-65-68-4665A



DESIGNED BY: J. H. ...  
 DRAWN BY: C. W. ...  
 TRACED BY: C. W. ...



BRIDGES OVER 20' SPAN				
PUB. ROAD	STATE	PROJECT	FISCAL	TOTAL
NO.	NO.	NO.	YEAR	SPANS
4	IND.	1-65-68-4699	1973	3
				12



NOTES: SEE DRAWING D2 FOR CONSTRUCTION PROCEDURE, STANDARD DRAWINGS AND OTHER LOCATIONS OF SECTION E-E.

**GENERAL PLAN  
DECK RECONSTRUCTION & OVERLAY  
SINGLE STRUCTURES**  
CONTINUOUS STEEL BEAM & R.C. GIRDER BRIDGES  
15 SPANS 30'-0", 62'-6", 75'-0", 82'-6", 30'-0" N.B. STRUCTURE  
15 SPANS 30'-0", 62'-6", 75'-0", 82'-6", 30'-0" S.B. STRUCTURE  
2-50'-0" ROADWAYS  
NORTH BOUND STRUCTURE TAPERED  
INTERSTATE ROUTE 65 OVER DRIFTWOOD RIVER

**STATE HIGHWAY DEPARTMENT OF INDIANA**  
BARTHOLOMEW COUNTY

SCALE: AS NOTED  
DATE: JULY 5, 1972  
SUBMITTED FOR APPROVAL: *E. W. Walter*

DRAWING: BY OF A  
PROJECT: I-65-2-(82)68  
BRIDGE CONTRACT NO. B-9146  
BRIDGE FILE: 1-65-68-4699

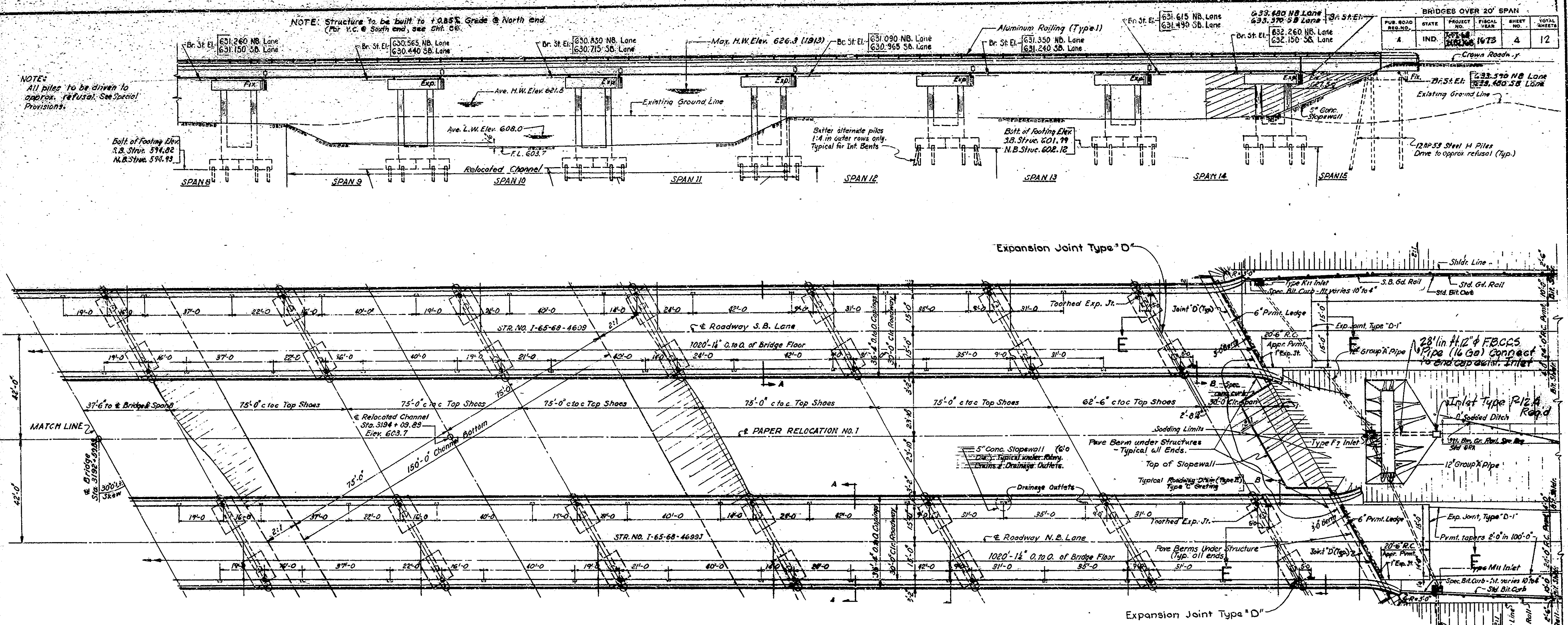


DESIGNED: B.C.M. & D.S. C.Y.D. & T.P.  
DRAWN: D.E.P. C.W.D. J.A.C. & D.G.  
TRACED: C.W.D.

TYPICAL DECK SECTIONS  
SECTION B-B - TYPICAL SPANS 1 & 5 S.B. STRUCTURE  
SPAN 15 N.B. STRUCTURE  
SECTION C-C - TYPICAL SPANS 2-5 INCL. N.B. STRUCTURE  
SECTION D-D - TYPICAL SPAN 1 N.B. STRUCTURE  
Rev. 6-22-73 Earth Barrier Inlet 12" Pipe  
Revision 4-19-73 Detail A



BRIDGES OVER 20' SPAN				
PUB. ROAD REG. NO.	STATE	PROJECT YEAR	SHEET NO.	TOTAL SHEETS
4	IND.	1973	4	12



**CONSTRUCTION PROCEDURE**

- 1 Build crossovers at locations as directed by the Engineer, install temporary pavement stripe tape, close northbound structure and divert traffic to southbound lanes.
- 2 Scarify the heavily spalled areas of the bridge floor at locations selected and to depths directed by the Engineer. Scarify portions of the approach pavement; remove scarified dust, clean the exposed reinforcing and remove concrete around reinforcing steel as specified in the Special Provisions.
- 3 Place Portland Cement Concrete bonded with epoxy bonding compound in all areas to be patched. Finish smooth to level of adjacent Concrete.
- 4 Prepare the joint at bent #2 as shown on detail. Clean out and saw cut the existing one inch expansion joints and prepare as shown on detail.
- 5 Install the type "D" expansion joints at toothed joints and protect temporarily.
- 6 Place the coal Tar interlayer protective coat over the bridge floor and portions of approach pavement within the limits shown on the plans and by the method specified in the Special Provision.
- 7 Place the 1/2 inch bituminous surface and place bituminous tapers at each end of the structure to match the new surface.
- 8 Clean and seal face and top of curbs, top of expansion dam, inside face and top of parapet walls, and new railing brackets, with a penetrating epoxy sealer. Install bridge seal at bent #2.
- 9 Rebuild railing on structures and install guard rail structures and earth barriers at locations as shown on plans.
- 10 Install new temporary pavement stripe tape, close Southbound structure, and divert traffic to Northbound lanes.
- 11 Repeat Steps 2 thru 9, except bent #2 in step 4 to Southbound lanes.
- 12 Open to traffic.

Note: The numbers do not necessarily indicate the sequence of operations. Pneumatic hammer 30 lbs. max. weight to be used for removals.

STANDARD DRAWINGS	
SYD	PURPOSE
Det. 311	Decor Signs
Det. 312	Decor Signs
Det. 313	Decor Signs
Det. 314	Decor Signs
Det. 315	Decor Signs
Det. 316	Decor Signs
Det. 317	Decor Signs
Det. 318	Decor Signs
Det. 319	Decor Signs
Det. 320	Decor Signs
Det. 321	Decor Signs
Det. 322	Decor Signs
Det. 323	Decor Signs
Det. 324	Decor Signs
Det. 325	Decor Signs
Det. 326	Decor Signs
Det. 327	Decor Signs
Det. 328	Decor Signs
Det. 329	Decor Signs
Det. 330	Decor Signs
Det. 331	Decor Signs
Det. 332	Decor Signs
Det. 333	Decor Signs
Det. 334	Decor Signs
Det. 335	Decor Signs
Det. 336	Decor Signs
Det. 337	Decor Signs
Det. 338	Decor Signs
Det. 339	Decor Signs
Det. 340	Decor Signs
Det. 341	Decor Signs
Det. 342	Decor Signs
Det. 343	Decor Signs
Det. 344	Decor Signs
Det. 345	Decor Signs
Det. 346	Decor Signs
Det. 347	Decor Signs
Det. 348	Decor Signs
Det. 349	Decor Signs
Det. 350	Decor Signs
Det. 351	Decor Signs
Det. 352	Decor Signs
Det. 353	Decor Signs
Det. 354	Decor Signs
Det. 355	Decor Signs
Det. 356	Decor Signs
Det. 357	Decor Signs
Det. 358	Decor Signs
Det. 359	Decor Signs
Det. 360	Decor Signs
Det. 361	Decor Signs
Det. 362	Decor Signs
Det. 363	Decor Signs
Det. 364	Decor Signs
Det. 365	Decor Signs
Det. 366	Decor Signs
Det. 367	Decor Signs
Det. 368	Decor Signs
Det. 369	Decor Signs
Det. 370	Decor Signs
Det. 371	Decor Signs
Det. 372	Decor Signs
Det. 373	Decor Signs
Det. 374	Decor Signs
Det. 375	Decor Signs
Det. 376	Decor Signs
Det. 377	Decor Signs
Det. 378	Decor Signs
Det. 379	Decor Signs
Det. 380	Decor Signs
Det. 381	Decor Signs
Det. 382	Decor Signs
Det. 383	Decor Signs
Det. 384	Decor Signs
Det. 385	Decor Signs
Det. 386	Decor Signs
Det. 387	Decor Signs
Det. 388	Decor Signs
Det. 389	Decor Signs
Det. 390	Decor Signs
Det. 391	Decor Signs
Det. 392	Decor Signs
Det. 393	Decor Signs
Det. 394	Decor Signs
Det. 395	Decor Signs
Det. 396	Decor Signs
Det. 397	Decor Signs
Det. 398	Decor Signs
Det. 399	Decor Signs
Det. 400	Decor Signs

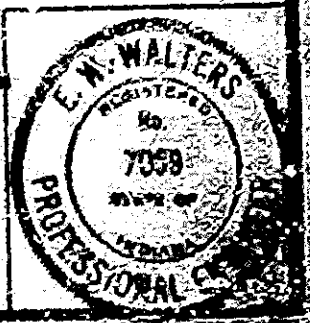
2 Construction Identification Signs Type XMB Road (Not a pay item. Place as directed by Engineer)

Rev. 6-22-73 Earth Barrier, Inlet 12" Pipe, Sid. Dwg. Const. Procd.  
 Rev. 11-27-73 Sid. Dwg. & CI Sign Note  
 Revision 2-16-73 Title and Standard Drawings

GENERAL PLAN CONTINUED  
 DECK RECONSTRUCTION AND OVERLAY  
 OVER DRIFTWOOD RIVER ON I-65  
 STATE HIGHWAY DEPARTMENT OF INDIANA  
 BARTHOLOMEW COUNTY

SCALE: AS NOTED DATE: JULY 5, 1972  
 SUBMITTED FOR APPROVAL: E. W. Walters  
 ASSISTANT ENGINEER OF BRIDGE CONSTRUCTION

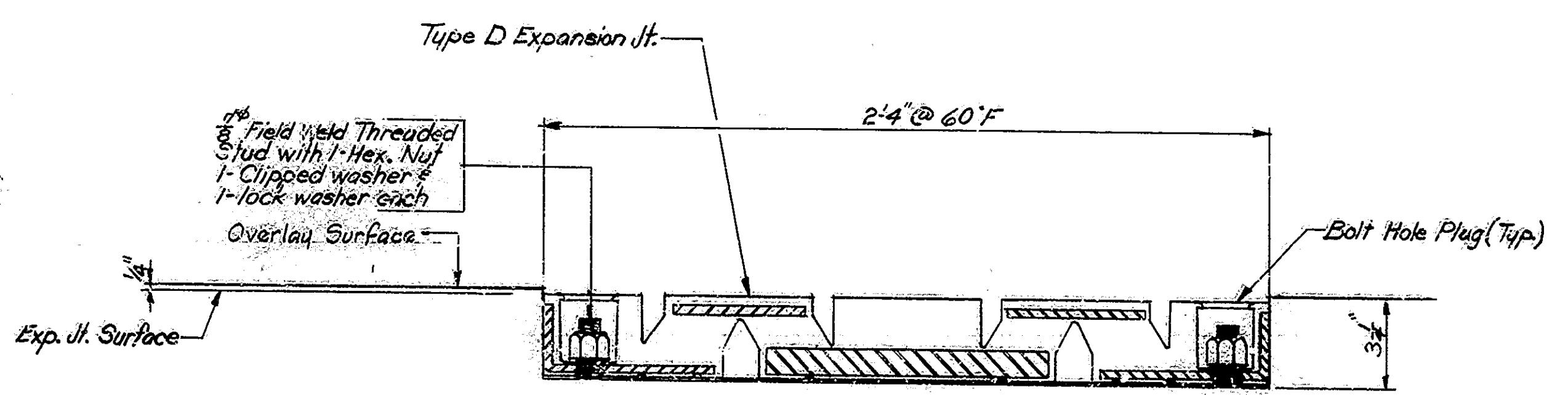
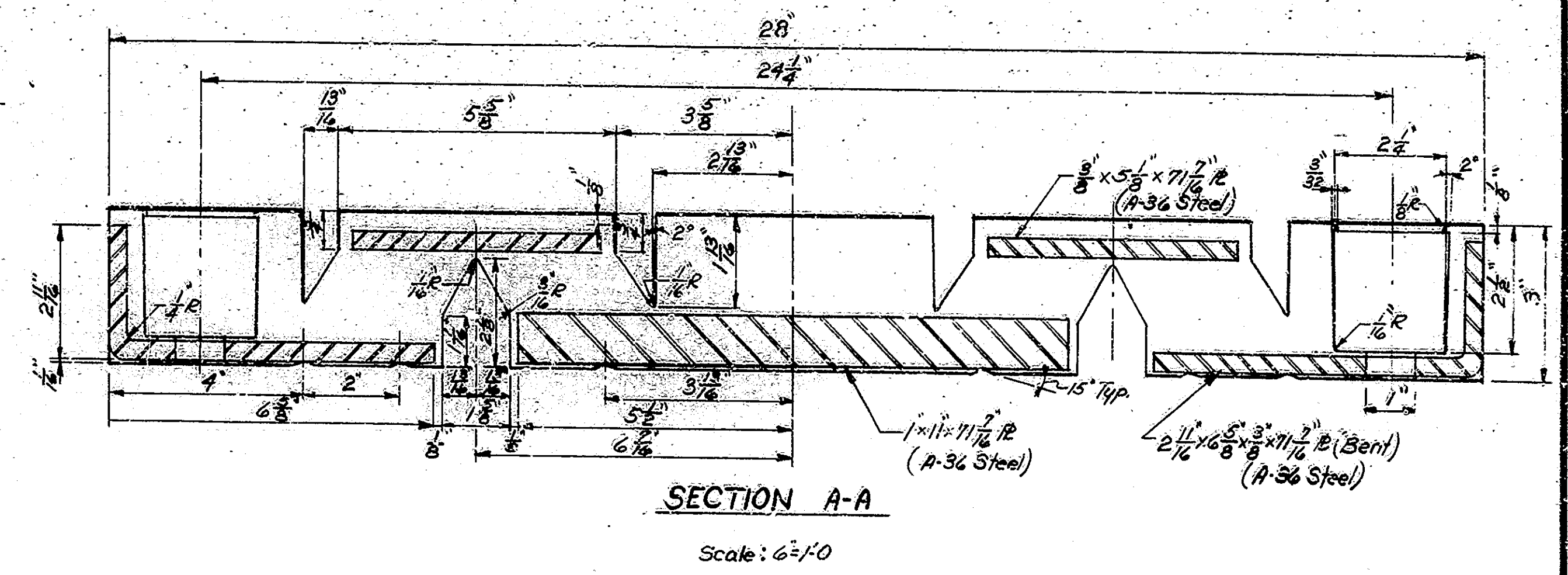
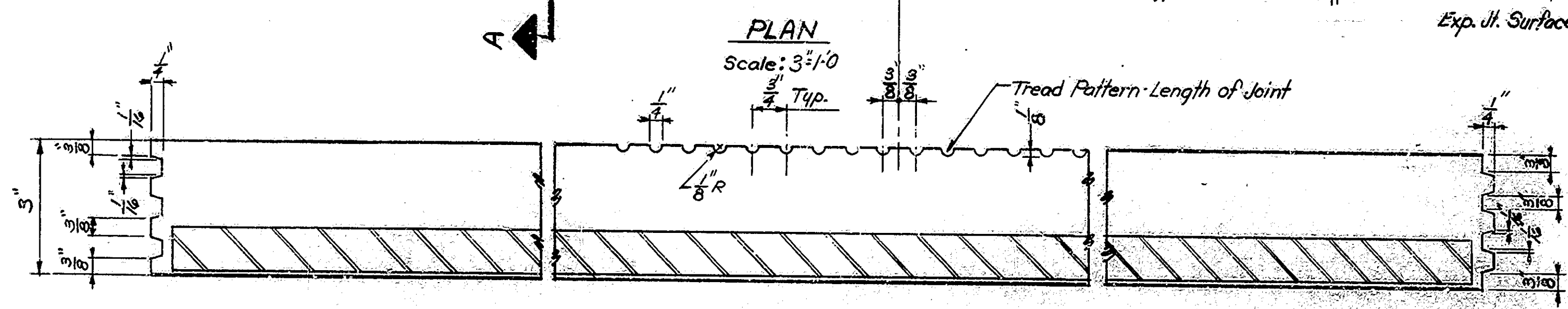
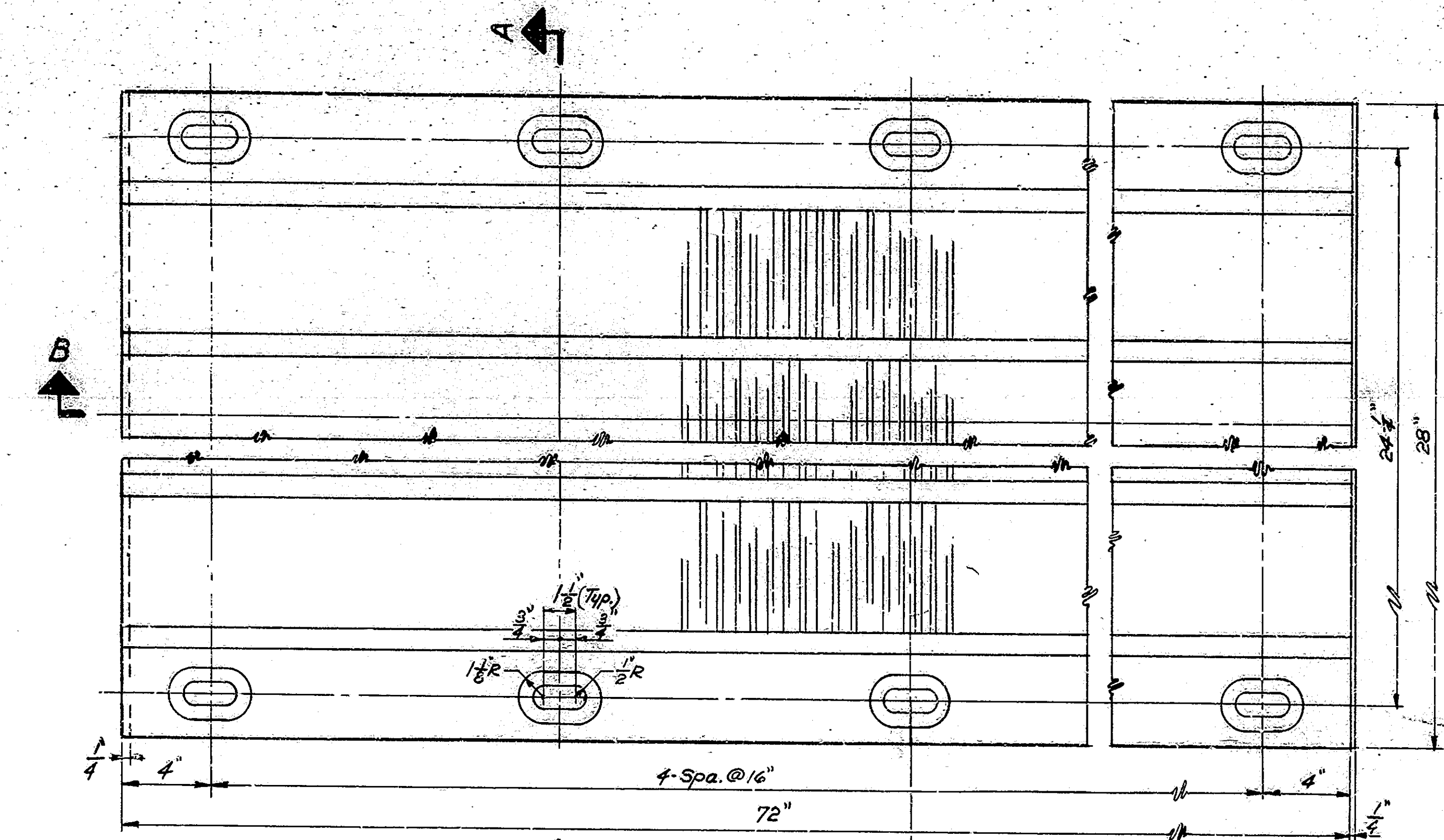
DRAWING: D-2 OF 4  
 PROJECT: I-FI-65-2(82)68  
 BRIDGE CONTRACT NO. B 9144  
 BRIDGE FILE: I-65-68-460A-4JA



DESIGNED: CMC & DEC CWD 08-1-77  
 DRAWN: T.W. CWD 08-1-77  
 TRACED: CWD



BRIDGES OVER 20' SPAN					
PUB. ROAD	STATE	PROJECT	FISCAL	SHEET	TOTAL
NO.		NO.	YEAR	NO.	SHEETS
4	IND.	1-11-68 2(82)68	1972	5	12



Prepare ends of threaded studs for full penetration field weld unless automatically welded studs are used.

DETAIL A  
No Scale

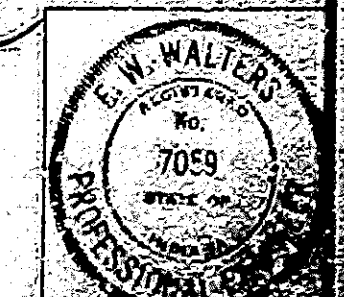
NOTES:  
Refer to Special Provisions for physical properties of materials and construction methods.  
The cost of the Threaded Studs, Concrete Anchors (if required), Bolt Hole Plugs and all materials needed to erect the expansion joint shall be included in the cost of the pay item Type D Expansion Joint.  
Tighten nuts on 2" Threaded Studs to 100 ft/lbs torque.  
All Bolt Holes to be plugged with proper Bolt Hole Plugs as supplied by the manufacturer.

TYPE D EXPANSION JOINT DETAILS  
INDIANA STATE HIGHWAY COMMISSION

SCALE: AS NOTED DATE: JULY 5, 1972

RECOMMENDED FOR APPROVAL: E. W. Walters

DRAWING: D 3 of 4  
PROJECT: I-11-68 2(82)68  
CONTRACT NO: B-5146  
BRIDGE FILE: I-11-68 4699 A-1 JA

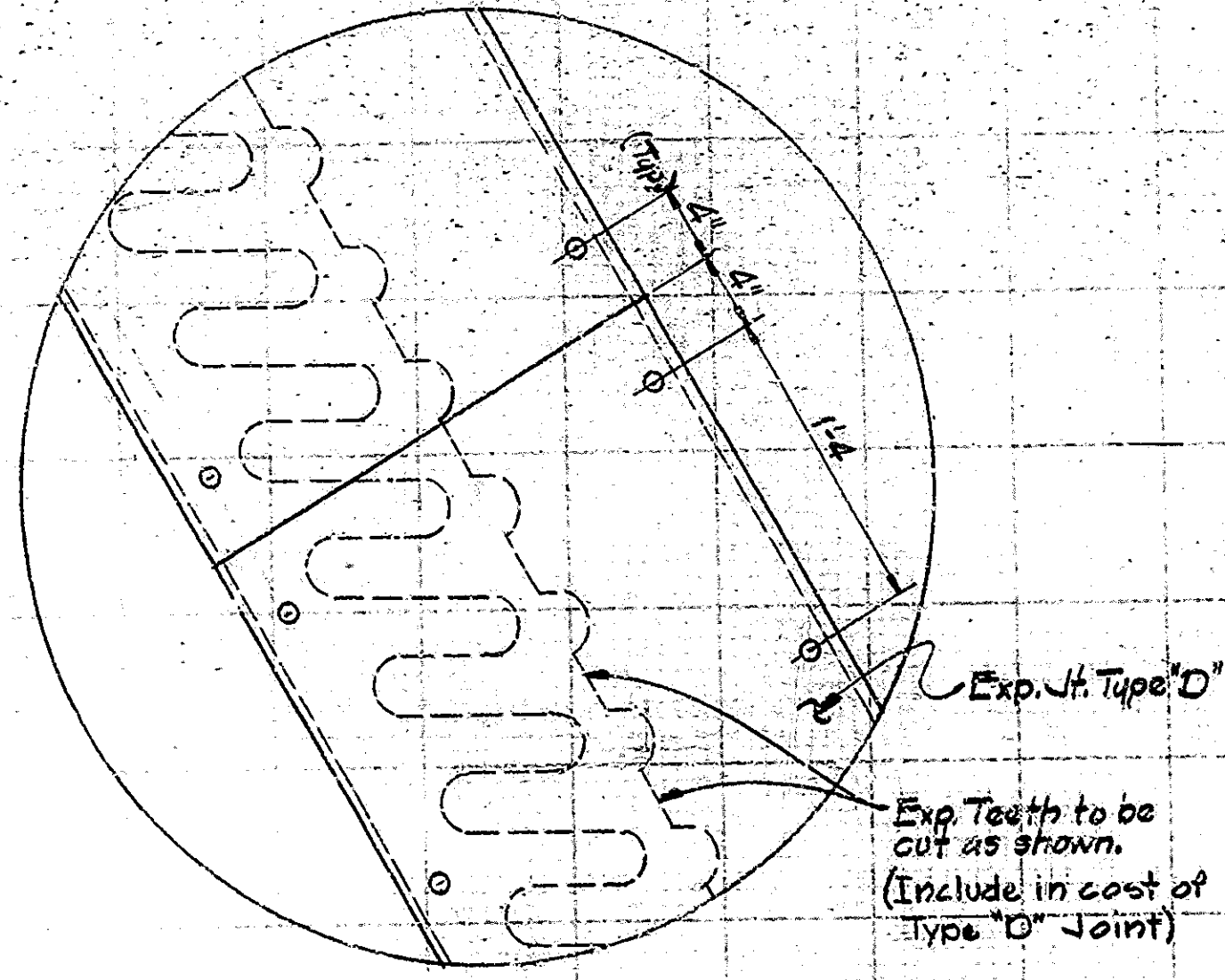
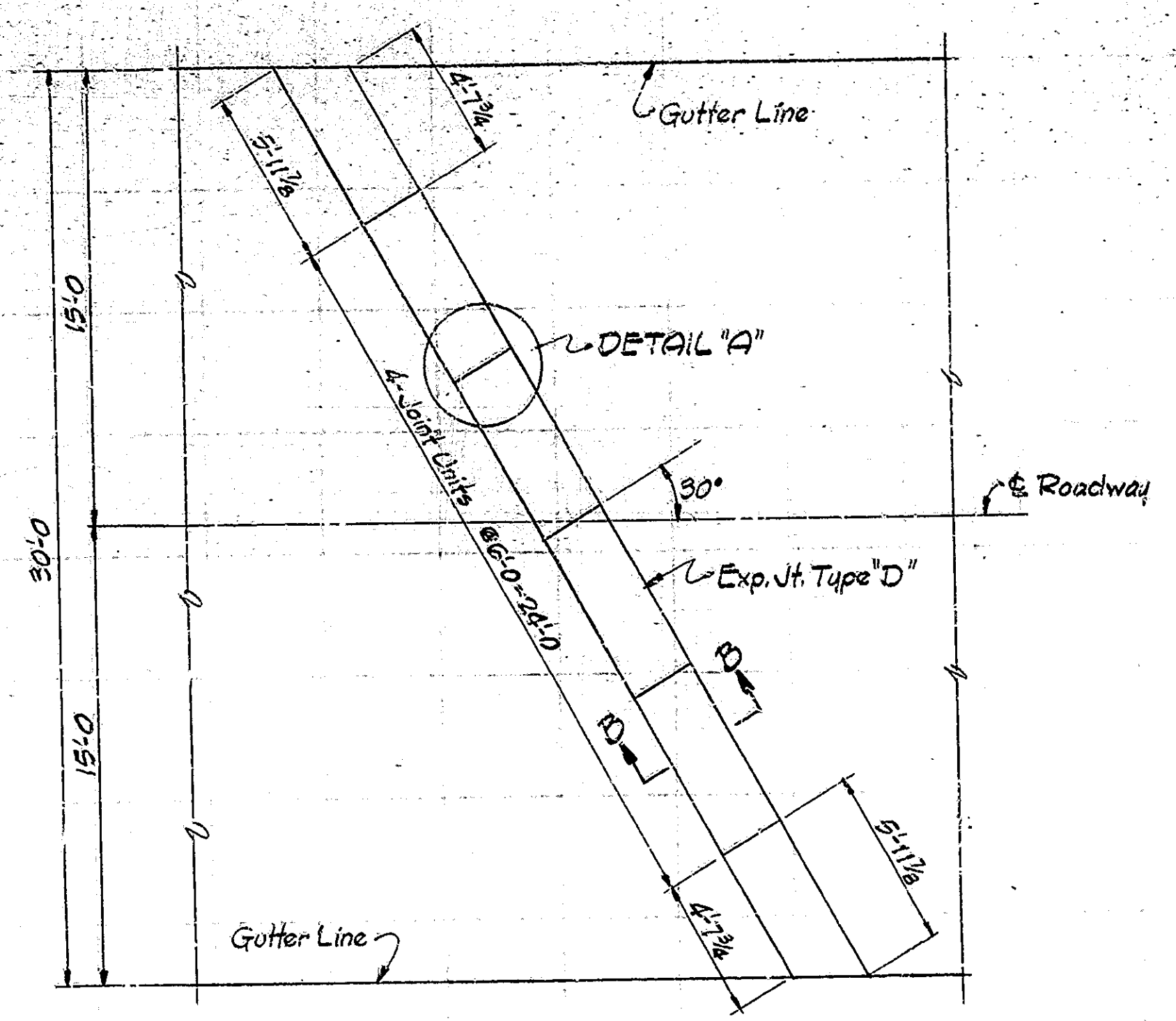


DESIGNED	CKD
DRAWN	CKD
TRACED	CKD

Revised 2-16-73 Detail A



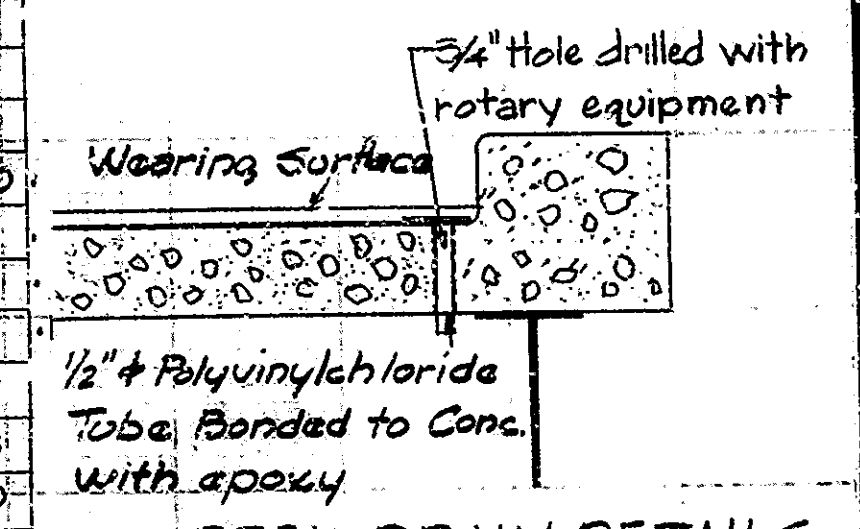
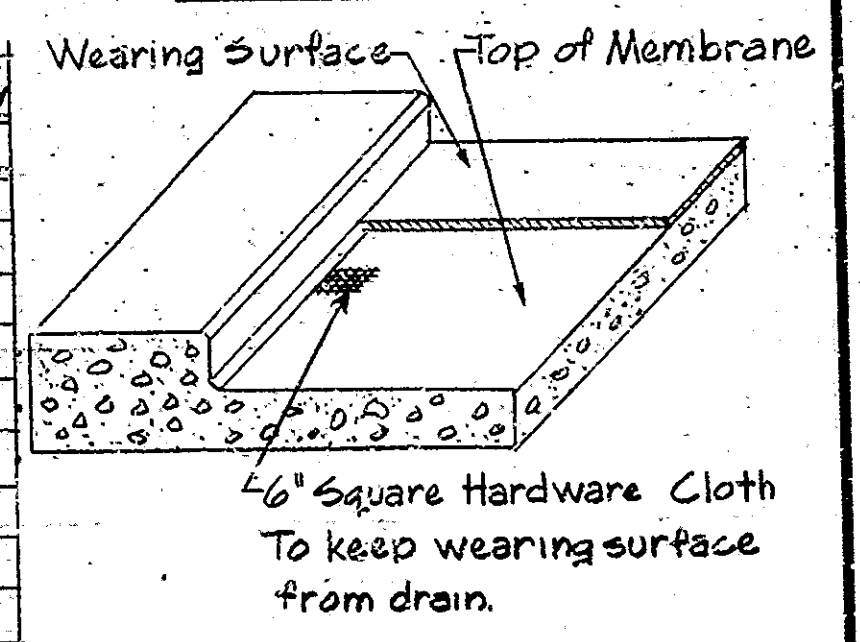
BRIDGES OVER 20' SPAN					
PUB. ROAD REG. NO.	STATE	PROJECT NO.	FISCAL YEAR	SHEET NO.	TOTAL SHEETS
4	IND.	E-11-65-2(32)68	1973	6	12



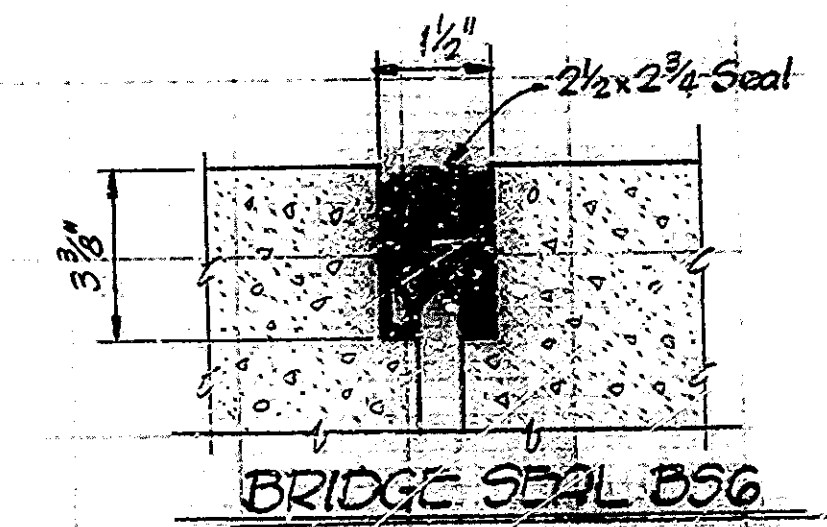
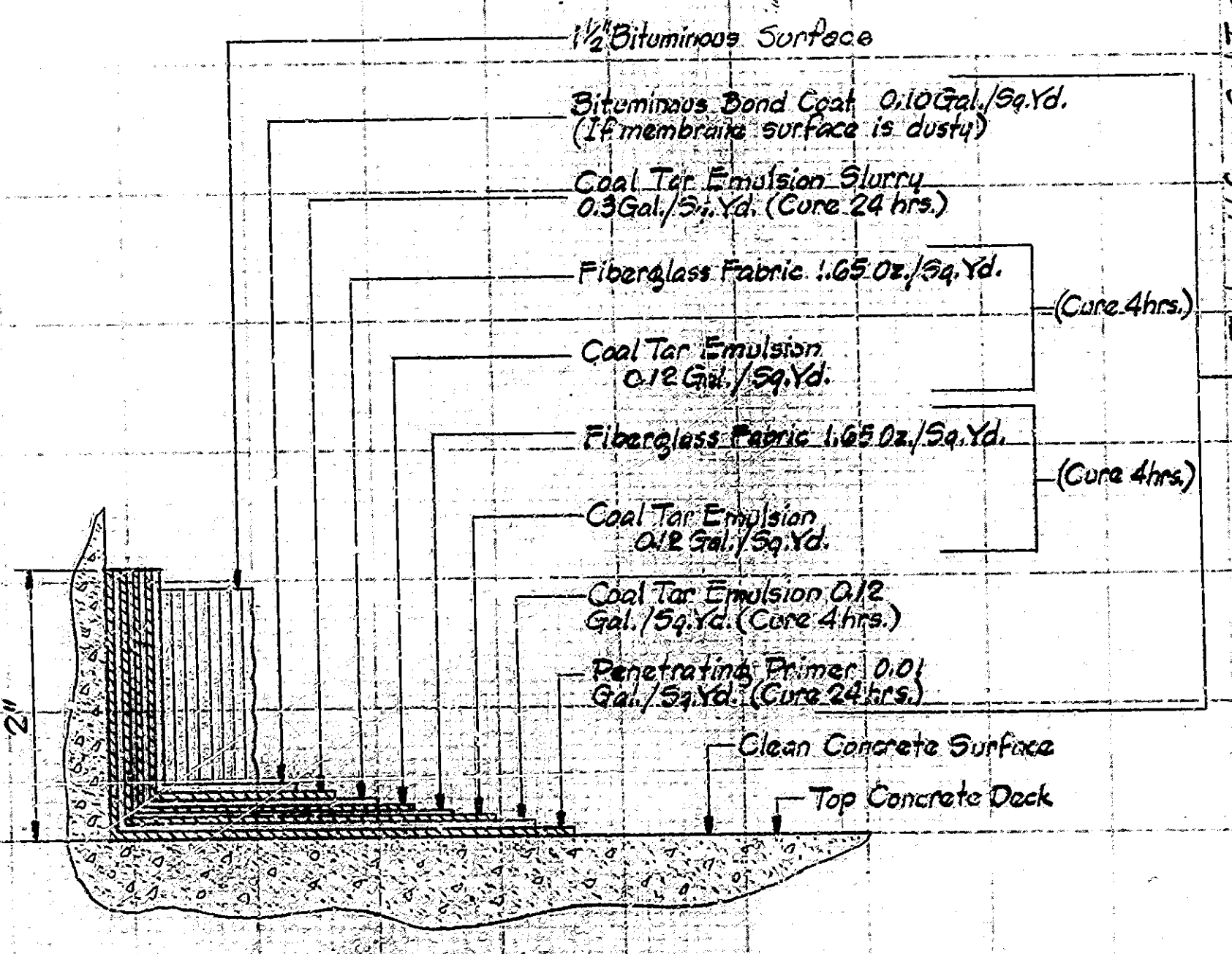
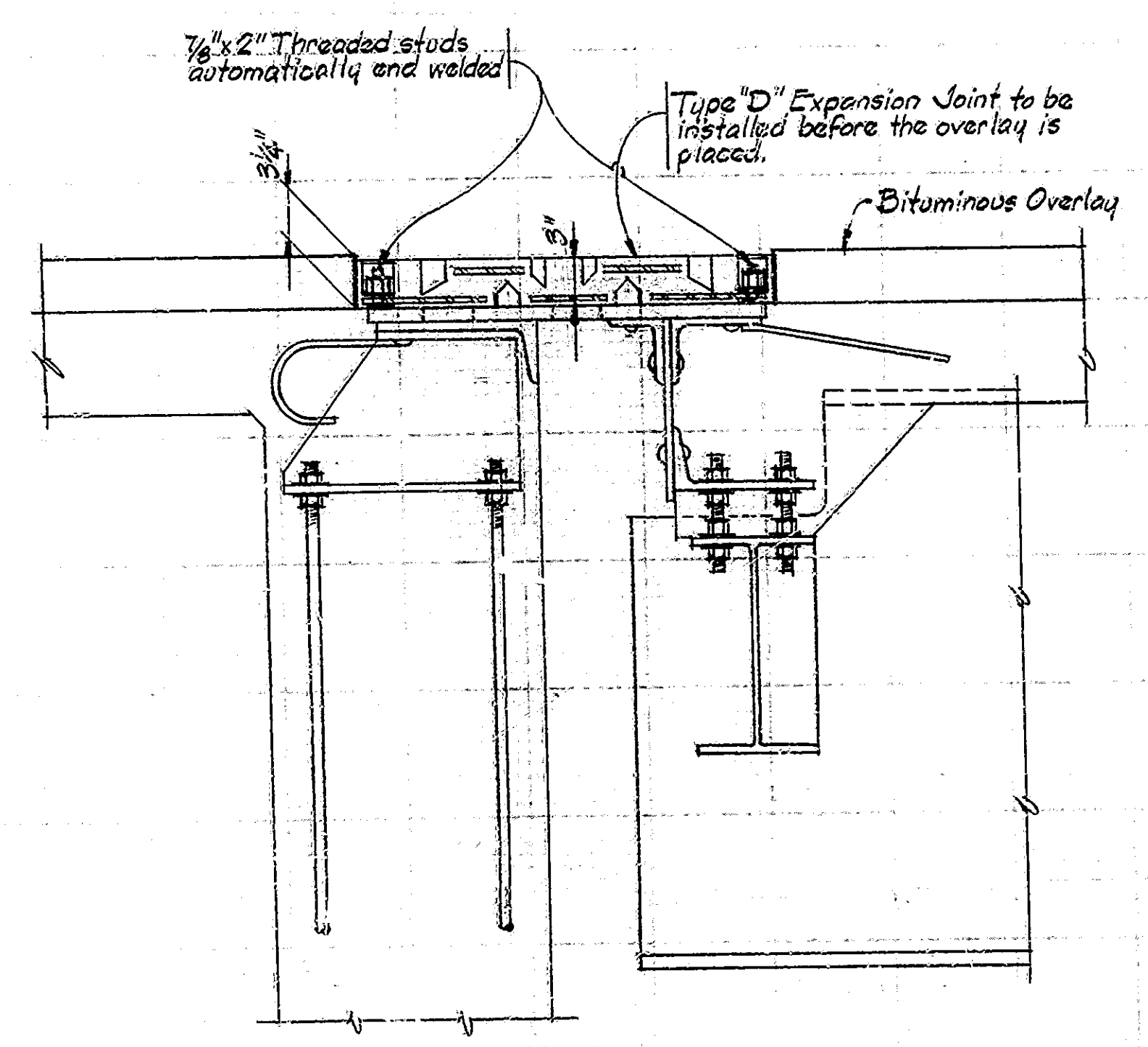
Note: Tooth Expansion Joint to be painted before Type "D" Joint is installed. (Include in cost of Type "D" Joint.)

(a) Includes concrete removal, saw cuts, cleaning, reinforcing, and epoxy bonding compound.  
(b) Estimated Quantity = 8097 Sq. Yd.

SUMMARY DESCRIPTION	UNIT	Quantity		Total
		20/10	30/50	
Common Excavation	Cys	550	30	400
Borrow	Cys	951	429	1380
Construction Signs (Type A)	Each	20.8	10.2	31
Construction Signs (Type B)	Each	8.7	4.3	13
Mulched Seeding	Sq.	6024	2376	8400
Standard Barricades, Type III	Each	2.7	1.3	4
Bituminous Mixture for Approaches	Tons	1670	504	2174
Maintaining Traffic	L.S.	3/2	1/2	1
Deck Drains	Each	240	-	240
Temp. Pmnt. Marking Tape	Lin. Ft.	5085	7405	22490
Temp. Pmnt. Marking Paint	Lin. Ft.	1775	875	2650
15" C.S. Pipe 16 Ga.	Lin. Ft.	276	38	312
Inlet Type P-12 A	Each	4	-	4
Surface Sealer	Sq. Ft.	-	28910	28910
Expansion Joint Type "D"	Lin. Ft.	139	-	139
Joint Type BS6	Lin. Ft.	190	-	190
Pavement Removal	Sq. Yd.	25	13	38
(a) Special Class "A" Concrete	Sq. Ft.	-	6500	6500
(b) Coal Tar Interlayer Protective Coat	L.S.	1	-	1
Lighting for Temporary Crossover Type A	Each	1.3	.7	2
Lighting for Temporary Crossover Type B	Each	1.3	.7	2
Bituminous Material for Seal Coat	Tons	1.2	.8	2.5
Cover Aggregate #16	Tons	19.3	9.5	28.8
Bituminous Base #5	Tons	362	178	540
Guard Rail Type "G"	L.F.	1544	-	1544
Removal of Guard Rail	L.F.	1320	-	1320
Removal of Present Railing	L.F.	4635	-	4635
Barrier Railing Type "K"	L.F.	4868	-	4868
Sodding	Sq.	716	-	716
12" F.B.C.C. Pipe (16 Ga.)	L.F.	136	-	136



**DECK DRAIN DETAILS**  
(Place at 20' Spacing along gutter lines and adjacent to expansion dams.)



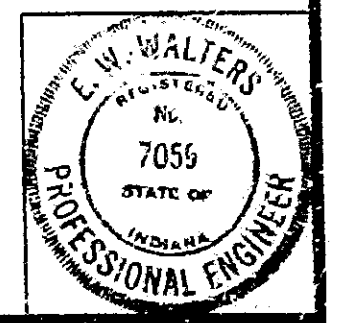
Minimum Joint Width = 1/4"  
Maximum Joint Width = 2 1/2"  
Minimum Joint Width @ Installation = 1 1/2"  
Minimum Joint Depth @ Installation = 3 3/8"

Note: The BS Joint Seal shall extend up 1" the face and across the top of curbs. Clean, cut, or rebuild existing curb joints to accommodate joint seal. Such work to be included in the cost of Joint Type BS6.

**DETAILS AND SUMMARY**  
**INDIANA STATE HIGHWAY COMMISSION**

SCALE: As Noted  
DATE: JULY 5, 1972  
RECOMMENDED FOR APPROVAL: *E. W. Walters*

DRAWING: D4 OF 4  
PROJECT: E-11-65-2(32)68  
CONTRACT NO. B-9146  
BRIDGE FILE: E-11-65-4699A & JA



DESIGNED: C.W.D.  
DRAWN: D.S. 9/28/72 C.W.D.  
TRACED: C.W.D.

Rev. 6-22-73 Summary  
Revision 4-19-75 Quantities  
Revision 3-16-78 Summary & Tooth note  
Revision 2-15-72 Summary

L. C. C. - 1155-A